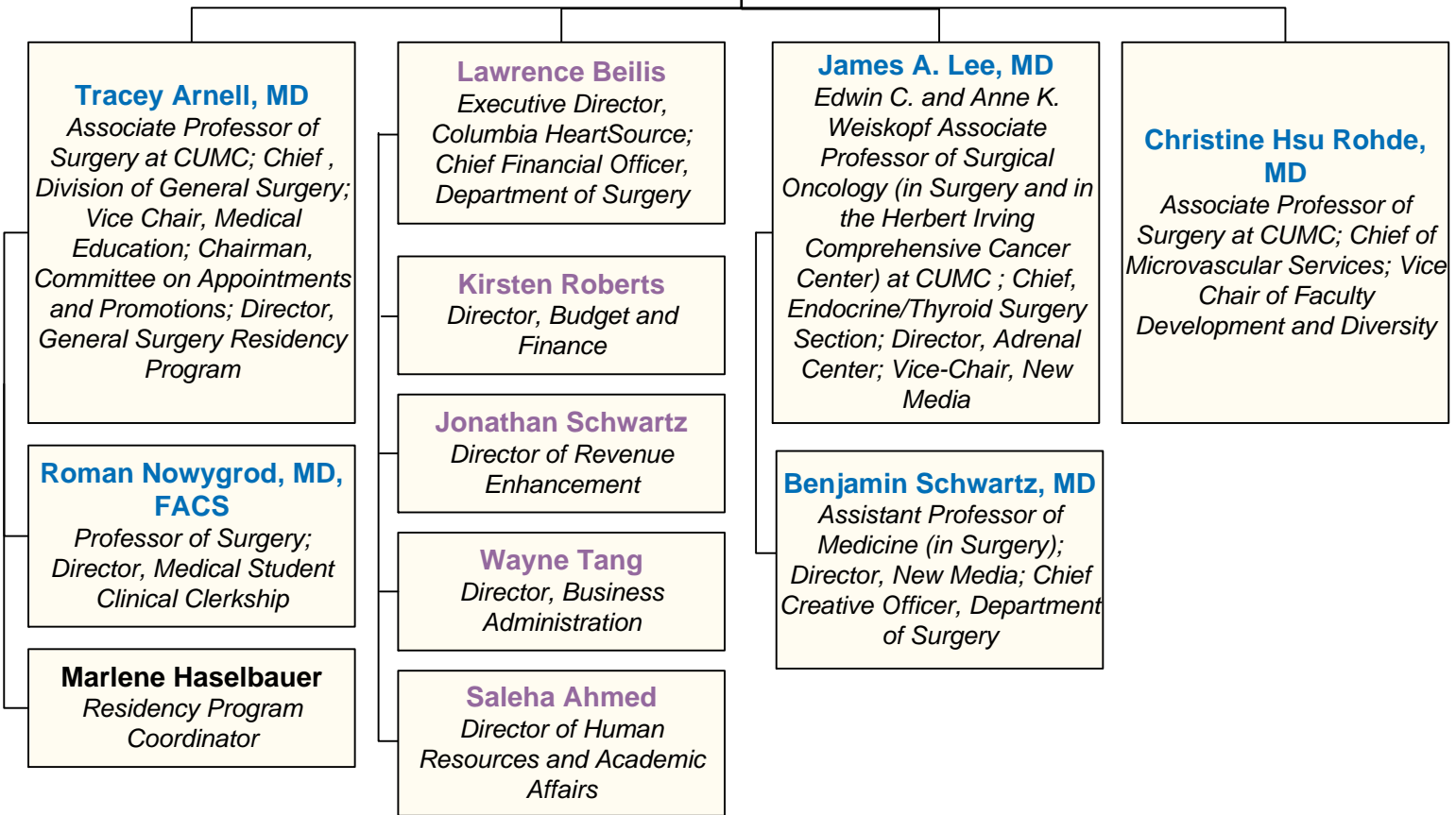


DEPARTMENT OF SURGERY LEADERSHIP

- Department of Surgery Faculty
- Affiliated Columbia & Cornell Faculty
- Directors
- PAs, NPs, and Nurse Coordinators
- Coordinators, Administrators, Managers, and Specialists

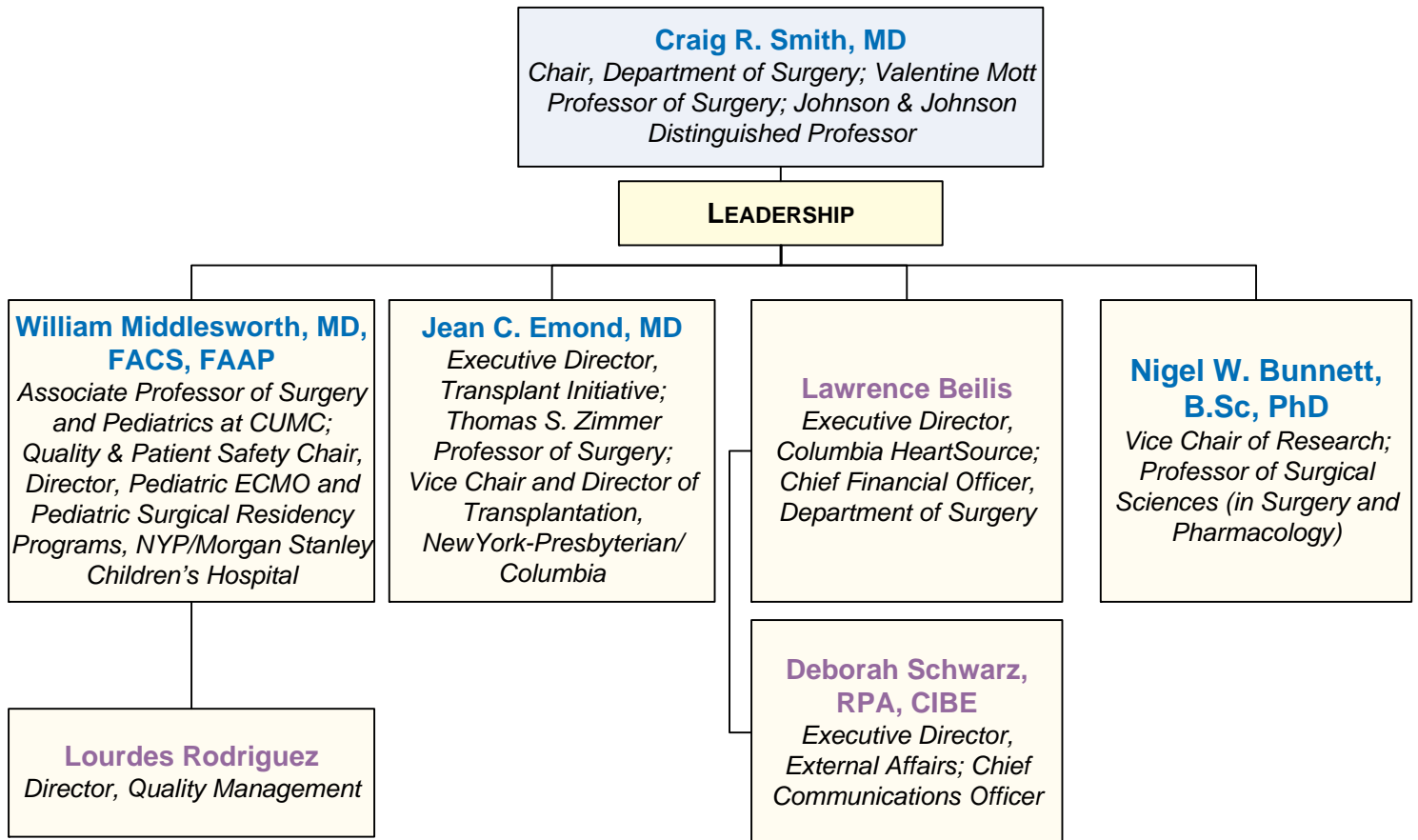
Craig R. Smith, MD
 Chair, Department of Surgery; Valentine Mott
 Professor of Surgery; Johnson & Johnson
 Distinguished Professor

LEADERSHIP



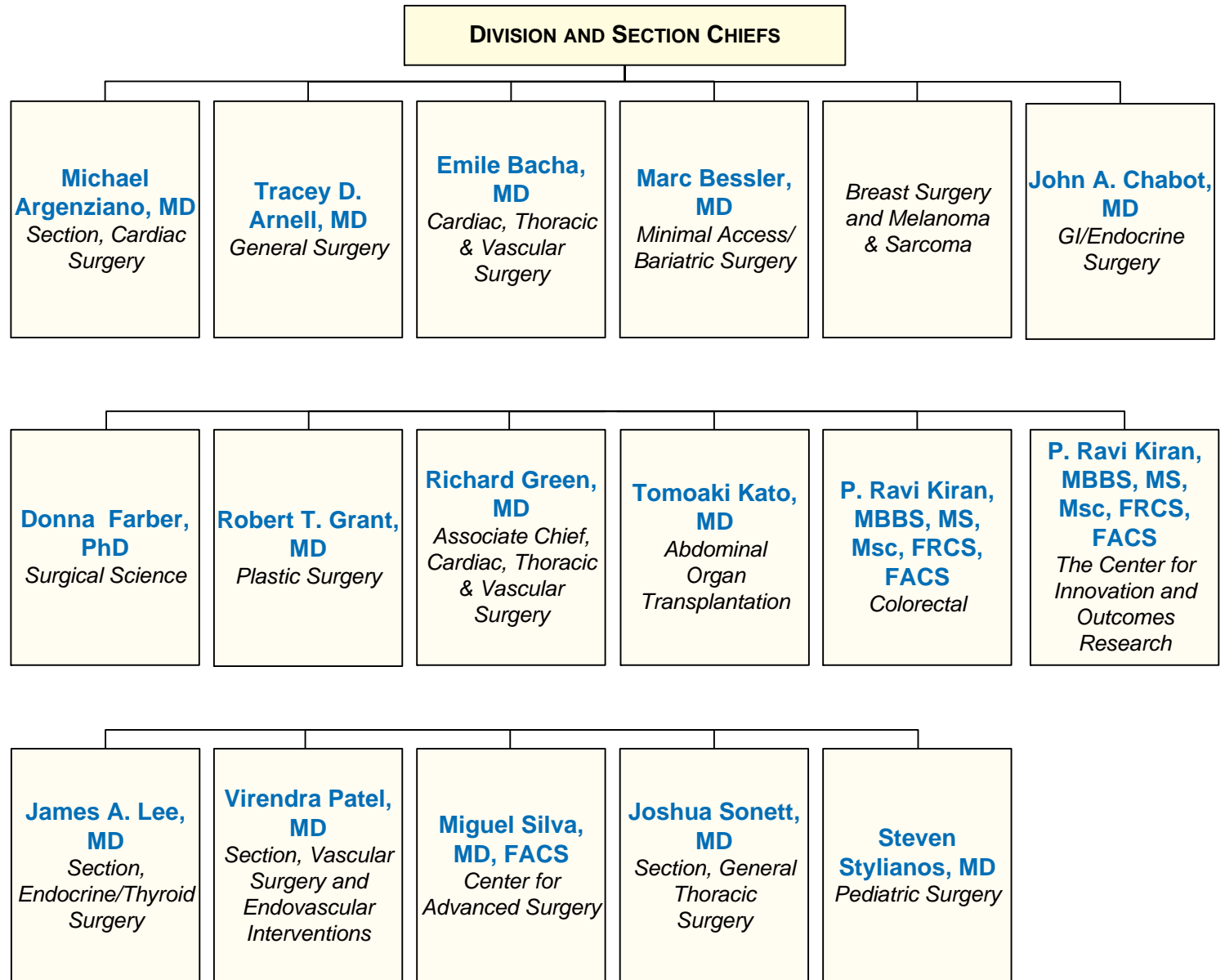
DEPARTMENT OF SURGERY LEADERSHIP

- Department of Surgery Faculty
- Affiliated Columbia & Cornell Faculty
- Directors
- PAs, NPs, and Nurse Coordinators
- Coordinators, Administrators, Managers, and Specialists

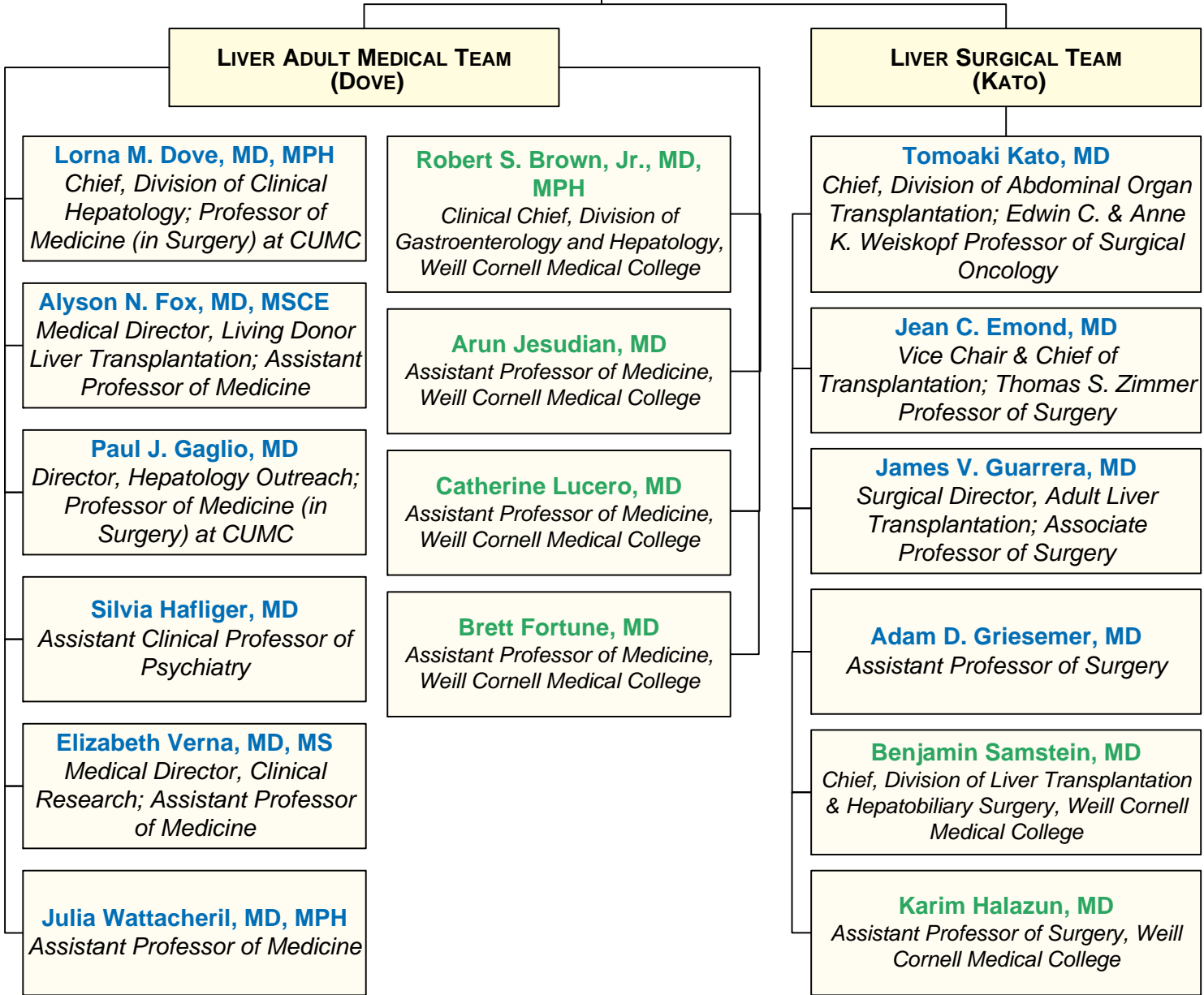


DEPARTMENT OF SURGERY LEADERSHIP

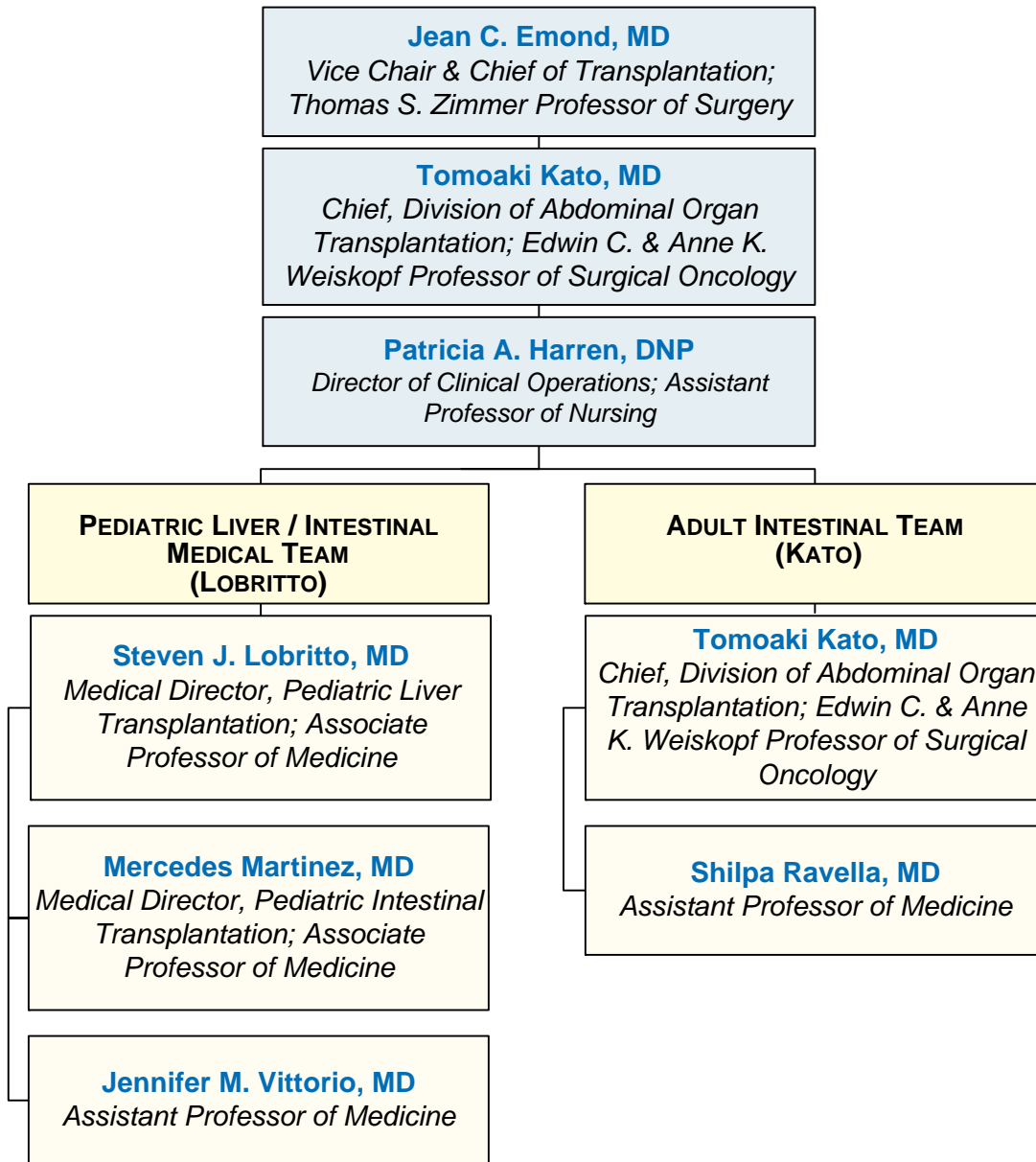
- Department of Surgery Faculty
- Affiliated Columbia & Cornell Faculty
- Directors
- PAs, NPs, and Nurse Coordinators
- Coordinators, Administrators, Managers, and Specialists



ABDOMINAL ORGAN TRANSPLANTATION



ABDOMINAL ORGAN TRANSPLANTATION



PHYSICIAN ASSISTANTS, NURSE PRACTITIONERS, AND NURSE COORDINATORS

Kristin Abernathy, RN
Lorin Amanda Albrecht PA-C
Janica Barnett, NP
Candace Belmore, RN
Sheila Bradley, NP
Damaris Carriero, NP
Judith Gang, NP
Nicole Golden, NP
Stella Goudie, RN
Patricia A. Harren, DNP

Nicole Kelly, NP
Lauren Kempf, DNP
Calvin Lee, NP
Lisa Lisanti, PA
Monica Nelson, RN
N. Kyla Osborne, NP
Anna Rundle, NP
Veronica Roye, RN
Karin Shears, NP
Monica Velasco, NP

ABDOMINAL ORGAN TRANSPLANTATION

Jean C. Emond, MD
*Vice Chair & Chief of Transplantation;
 Thomas S. Zimmer Professor of Surgery*

Tomoaki Kato, MD
*Chief, Division of Abdominal Organ
 Transplantation; Edwin C. & Anne K.
 Weiskopf Professor of Surgical Oncology*

**KIDNEY/PANCREAS
 ADULT MEDICAL TEAM
 (COHEN)**

David J. Cohen, MD
*Medical Director, Renal Transplantation;
 Professor of Medicine*

Jae H. Chang, MD
Assistant Professor of Medicine

R. John Crew, MD
Assistant Professor of Medicine

Geoffrey K. Dube, MD
Assistant Professor of Medicine

Sumit Mohan, MD
Assistant Professor of Medicine

Heather K. Morris, MD
Assistant Professor of Medicine

**KIDNEY/PANCREAS
 SURGICAL TEAM
 (RATNER)**

Lloyd E. Ratner, MD
*Surgical Director, Renal Transplantation;
 Professor of Surgery*

James V. Guarrera, MD
*Surgical Director, Adult Liver
 Transplantation; Associate Professor of
 Surgery*

Mark A. Hardy, MD
*Auchincloss Professor of Surgery;
 Director Emeritus & Founder, Renal and
 Islet Transplantation*

Kasi McCune, MD
Assistant Professor of Surgery

Roman Nowygrod, MD
*Professor of Surgery; Director, Medical
 Student Clinical Clerkship*

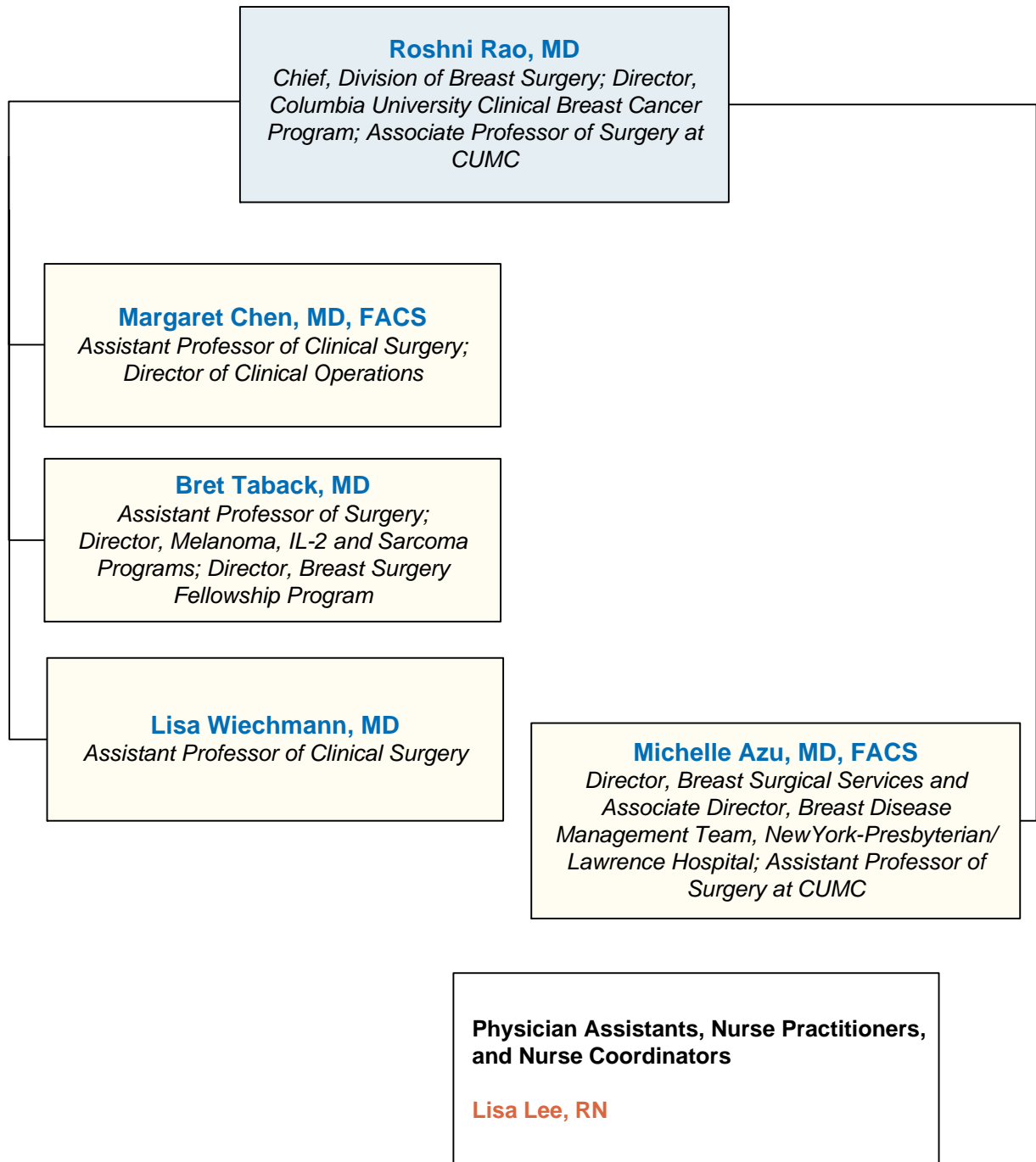
Pedro Rodrigo Sandoval, MD
Assistant Professor of Surgery

PHYSICIAN ASSISTANTS, NURSE PRACTITIONERS, AND NURSE COORDINATORS

Jessica Brown, RN	Maxine Morris, RN
Maureen Carroll, RN	Kimberly Nelson, PA
Leigh-Anne Dale, PA	Oluremi Williams, NP
Jillian Daleo, PA	Shefali Patel, NP
Moya Gallagher, RN	Brian Runge, RN
Erika Fox Green, PA	Mary Jane Samuels, RN
Agnes Kabiri, RN	Karin Sobeck, RN
Joan Kelly, RN	Karen Stugensky, PA
Jennifer Lione, RN	Ibadete Sulejmani, PA
	Jennifer Wexler, RN

BREAST SURGERY AND MELANOMA & SARCOMA

- Department of Surgery Faculty
- Affiliated Columbia & Cornell Faculty
- Directors
- PAs, NPs, and Nurse Coordinators
- Coordinators, Administrators, Managers, and Specialists



CARDIAC SURGERY

- Department of Surgery Faculty
- Affiliated Columbia & Cornell Faculty
- Directors
- PAs, NPs, and Nurse Coordinators
- Coordinators, Administrators, Managers, and Specialists

Emile A. Bacha, MD
Chief, Division of Cardiac, Thoracic & Vascular Surgery; Calvin F. Barber Professor of Surgery; Director, Congenital and Pediatric Cardiac Surgery, NYP/Morgan Stanley Children's Hospital; Adjunct Professor of Surgery, Weill Cornell Medical College

**ADULT CARDIAC
(ARGENZIANO)**

**PEDIATRIC CARDIAC
(BACHA)**

**HEARTSOURCE
(BEILIS)**

Michael Argenziano, MD, FACS
Chief, Section of Adult Cardiac Surgery; Professor of Surgery at CUMC; Director, Minimally Invasive Cardiac Surgery and Arrhythmia Surgery; Program Director, Cardiothoracic Residency Program

Vinayak Bapat, MBBS, MS, DNB, FRCS
Assistant Professor of Surgery at CUMC; Director, Transcatheter Valve Therapy

Isaac George, MD
Assistant Professor of Surgery at CUMC; Surgical Director, Transcatheter Cardiovascular Therapies Director, Hybrid Coronary Interventions

Yoshifumi Naka, MD, PhD
Professor of Surgery; Director, Cardiac Transplantation; Director, Mechanical Circulatory Support Program

Mehmet C. Oz, MD
Professor of Surgery at CUMC

Syed T. Raza, MD, FACS
Director Cardiac Surgery Step-down Unit, Cardiothoracic Surgery

Craig R. Smith, MD
Chair, Department of Surgery; Valentine Mott Professor of Surgery; Johnson & Johnson Distinguished Professor

Henry M. Spotnitz, MD
George H. Humphreys, II Professor of Surgery; Vice Chair, Research & Information Systems

Hiroo Takayama, MD, PhD
Associate Professor of Surgery at CUMC; Director of Cardiovascular Institute; Co-Director, Aortic Program; Co-Director, Marfan Clinic; Co-Director, HCM program, Division of Cardiac, Vascular & Thoracic Surgery, NYP/Columbia

Koji Takeda, MD, PhD
Assistant Professor of Surgery at CUMC

Emile A. Bacha, MD
Chief, Division of Cardiac, Thoracic & Vascular Surgery; Calvin F. Barber Professor of Surgery; Director, Congenital and Pediatric Cardiac Surgery, NYP/Morgan Stanley Children's Hospital; Adjunct Professor of Surgery, Weill Cornell Medical College

Paul J. Chai, MD
Assistant Professor of Surgery at CUMC

David Kalfa, MD, PhD
Assistant Professor of Surgery at CUMC

Jan M. Quaegebeur, MD, PhD
Morris & Rose Milstein Professor of Surgery; Director, Pediatric Cardiac Surgery, NewYork-Presbyterian

Lawrence Beilis
Chief Financial Officer

Susan J. Schnell
Director of Operations, HeartSource

Tanya Baskins, RN
QI RN

Emily Guderian
Manager, Cardiac Quality

Cynthia Kiphuth
Program Development Coordinator

Paul Kurlansky, MD
Director of Physician Recruitment and QI; Associate Director, Center for Innovations and Outcomes Research

Kevin Lotsis
Director of Business Development

Samantha Nemeth
Senior Analyst

Cindy Smith, RN
QI RN

CARDIAC SURGERY

- Department of Surgery Faculty
- Affiliated Columbia & Cornell Faculty
- Directors
- PAs, NPs, and Nurse Coordinators
- Coordinators, Administrators, Managers, and Specialists

Physician Assistants, Nurse Practitioners, and Nurse Coordinators

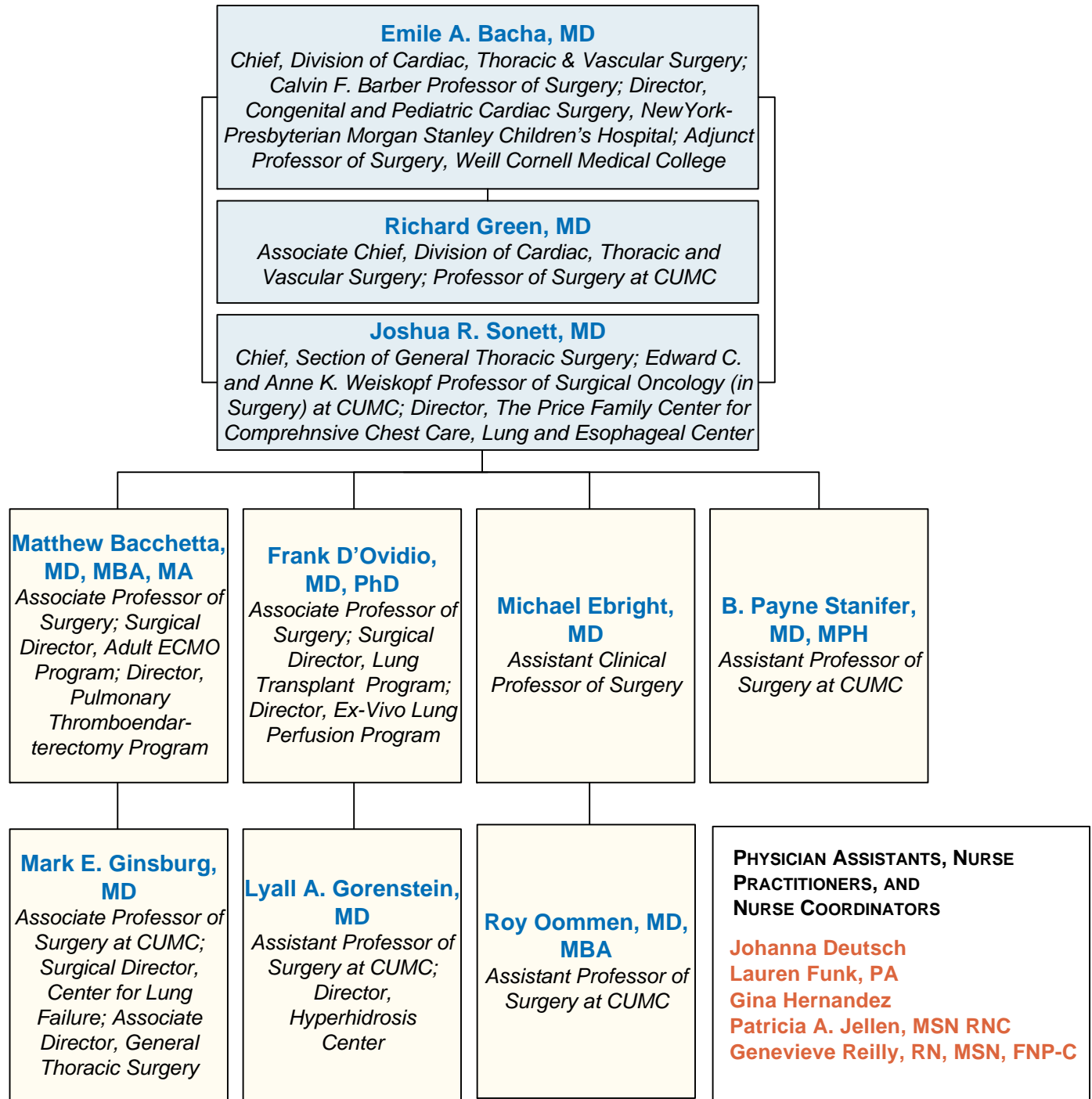
Laura Altman, PA
Rachel Ashbrook
Eric Beninghof, PA
Sarah Boss, PA
Katelyn Buckley
Ying Yu Chan, PA
Allison Chang
Autumn Chim, PA
Emily Clark, PA
Rozelle Corda, NP
Tom Cosola
Chris Coughlin
Brad Crerar, PA

Nicole Cruz, PA
Diane DeMartino, PA
Jimmy Doolittle, PA
Marybeth Duffy, NP
Devin Flanigan, PA
Jessica Fox, PA
George Gibbons, PA
Cara Jugant, PA
Jacquelyn Klein, PA
Christine Merle, NP
Jessica Panarella
Dana Reed, NP
Carolina Rezende, PA

Mindi Rodgers, PA
Alyssa Sarro, PA
Debbie Savarese, PA
Evelyn Smedberg, PA
Maryann Sous, PA
Kevin Swann, PA
Liz Wist, PA
Emmy Xhemali

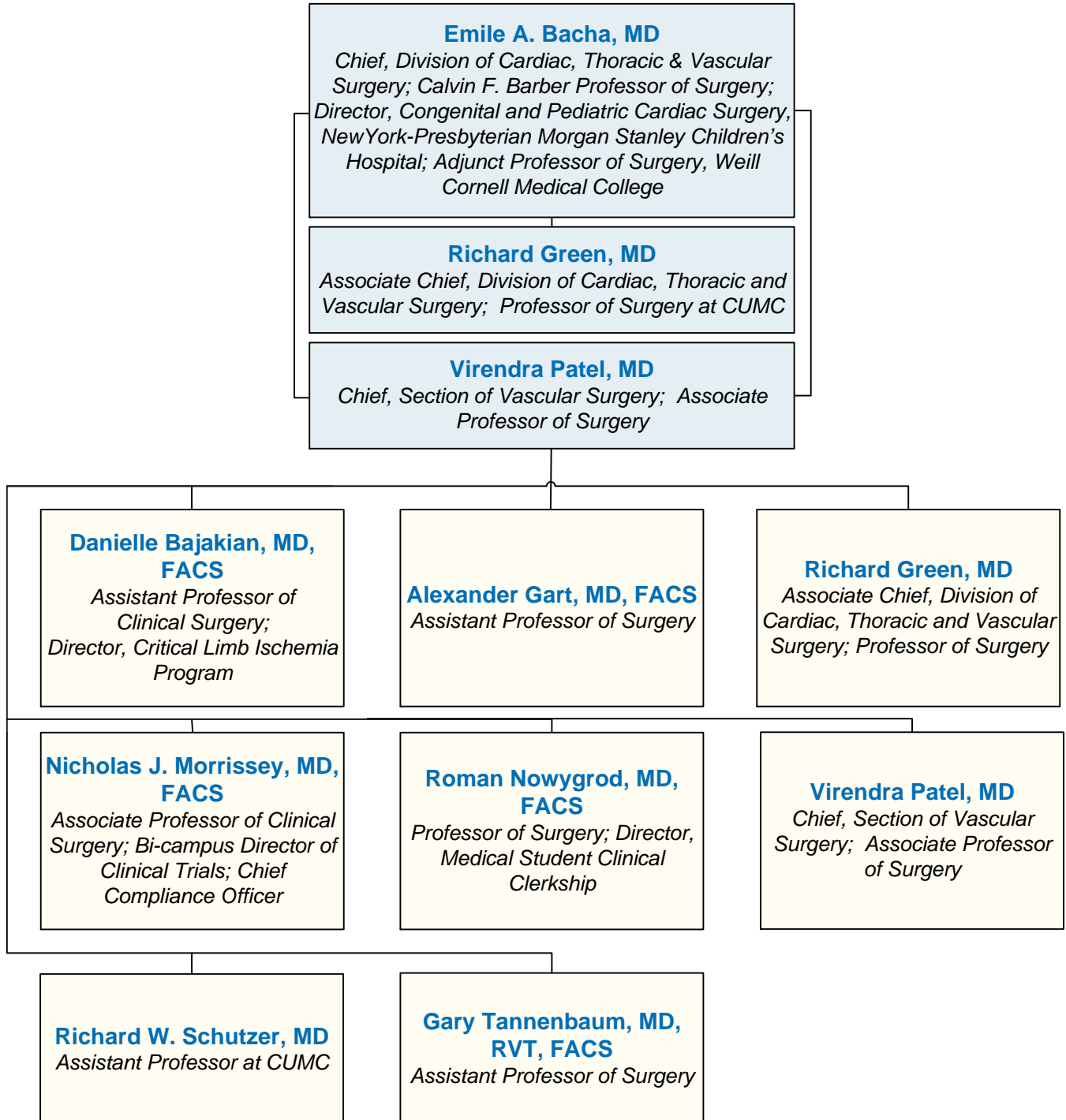
THORACIC SURGERY

- Department of Surgery Faculty
- Affiliated Columbia & Cornell Faculty
- Directors
- PAs, NPs, and Nurse Coordinators
- Coordinators, Administrators, Managers, and Specialists



VASCULAR SURGERY AND ENDOVASCULAR INTERVENTIONS

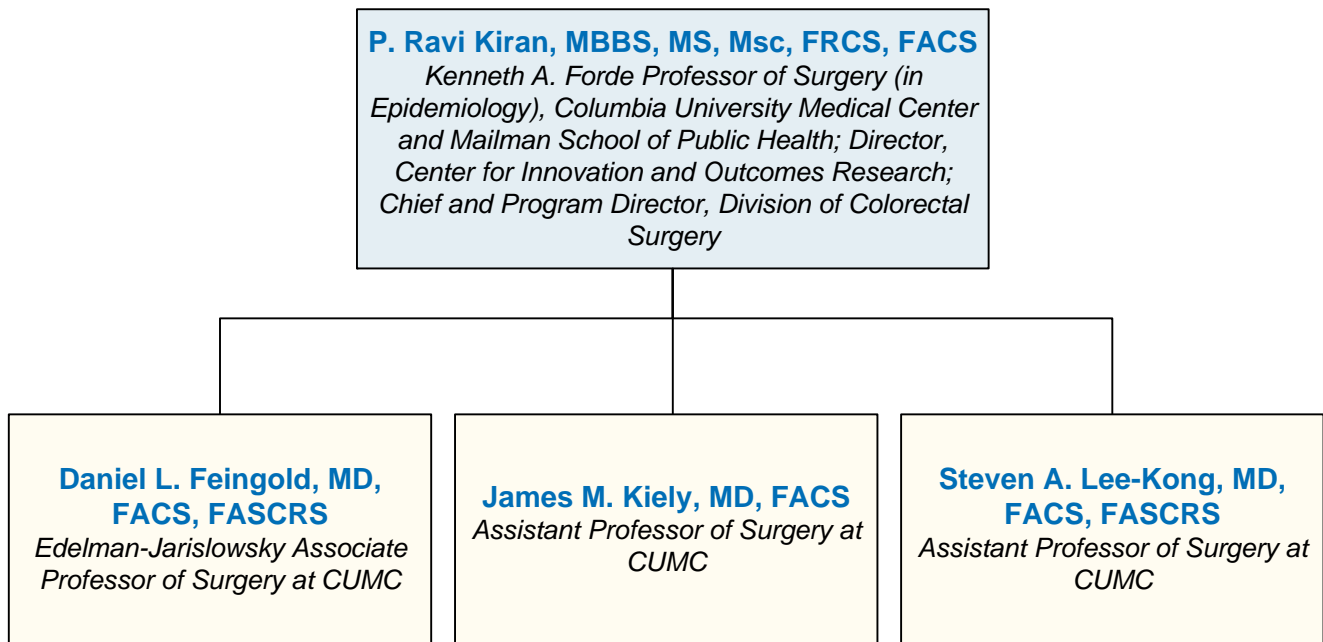
- Department of Surgery Faculty
- Affiliated Columbia & Cornell Faculty
- Directors
- PAs, NPs, and Nurse Coordinators
- Coordinators, Administrators, Managers, and Specialists



Division Administrator: **Katherine Ray, 212.305.1028**
 Information: **212.342.3255**
 Referrals: **855.CUSURGE**

COLORECTAL SURGERY

- Department of Surgery Faculty
- Affiliated Columbia & Cornell Faculty
- Directors
- PAs, NPs, and Nurse Coordinators
- Coordinators, Administrators, Managers, and Specialists

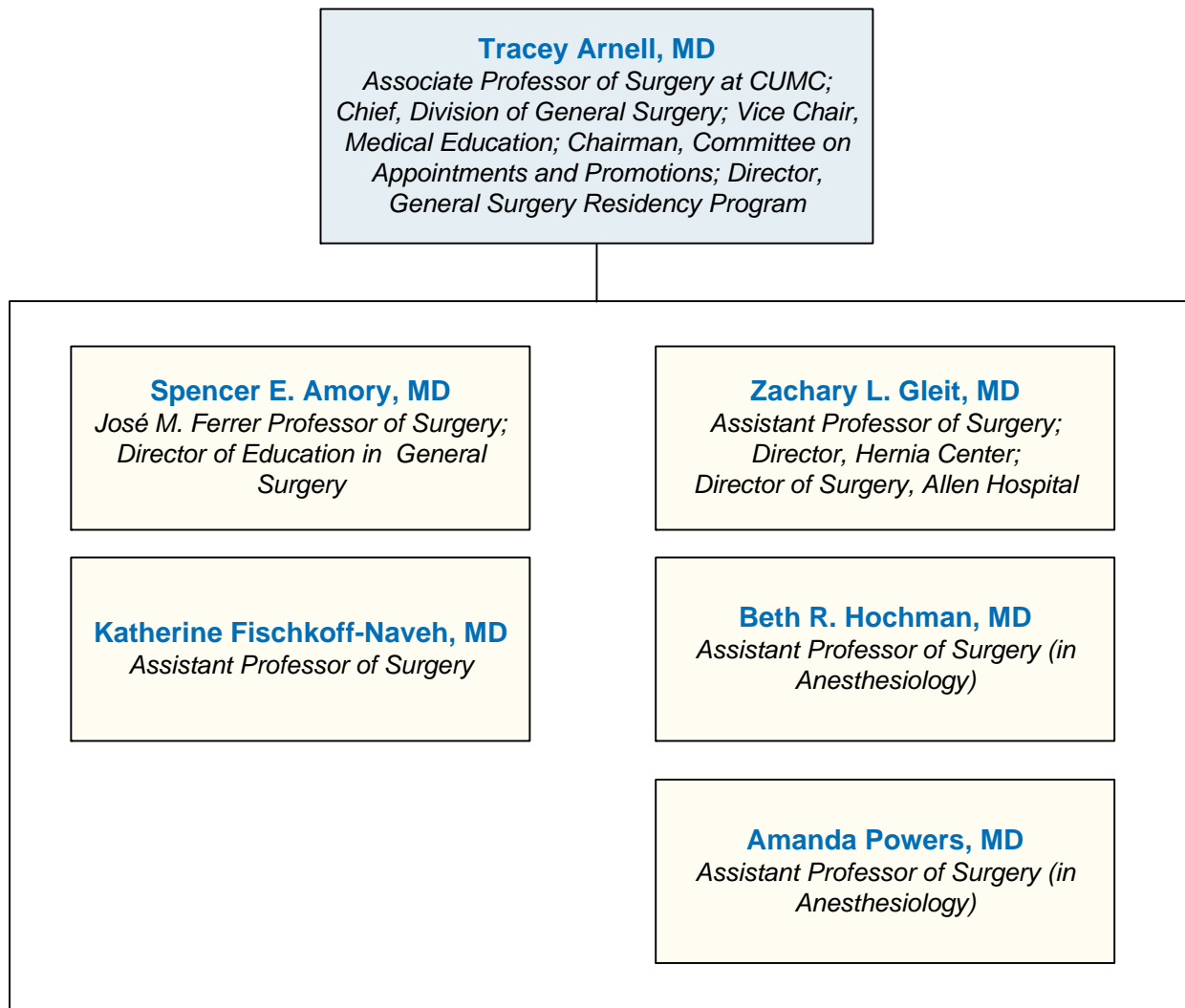


Physician Assistants, Nurse Practitioners, and Nurse Coordinators

Jeanne de Korte, NP
Vanessa Marra, RN, BSN, CWOCN, CMSRN
Jessica Rein, PA
Danielle Staub, MS, RD, CDN
Erin Testerman, RN, BSN, CWOCN
Sabrina Toledano, RD, CSO, CDN
Anna Varghese, NP

GENERAL SURGERY

- Department of Surgery Faculty
- Affiliated Columbia & Cornell Faculty
- Directors
- PAs, NPs, and Nurse Coordinators
- Coordinators, Administrators, Managers, and Specialists



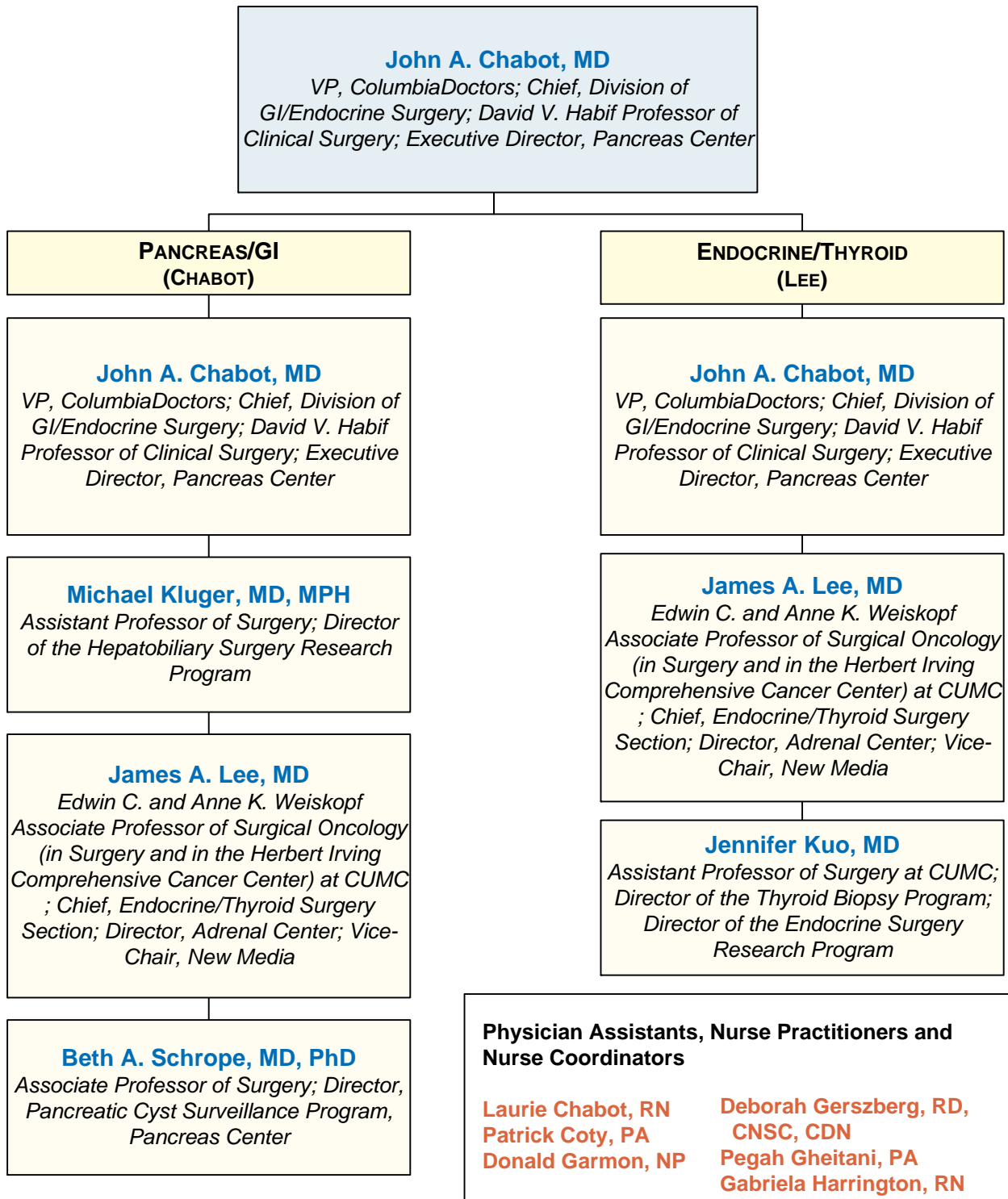
Physician Assistants, Nurse Practitioners, and Nurse Coordinators

Laura Alvarez, NP
Joanie Garcia, PA

Division Administrator: **Ana C. Rosario, 212.305.1976**
Referrals: **855.CUSURGE**

GI/ENDOCRINE SURGERY

- Department of Surgery Faculty
- Affiliated Columbia & Cornell Faculty
- Directors
- PAs, NPs, and Nurse Coordinators
- Coordinators, Administrators, Managers, and Specialists



CENTER FOR ADVANCED SURGERY NEW YORK-PRESBYTERIAN/LAWRENCE HOSPITAL

- Department of Surgery Faculty
- Affiliated Columbia & Cornell Faculty
- Directors
- PAs, NPs, and Nurse Coordinators
- Coordinators, Administrators, Managers, and Specialists

Miguel Silva, MD, FACS
*Assistant Professor of Surgery at CUMC;
Director, Center for Advanced Surgery,
Lawrence Hospital*

John-Paul Salvatore Bellistri, MD
Assistant Professor of Surgery at CUMC

Allen Chefitz, MD
Assistant Professor of Surgery at CUMC

Arpan Goel, MD
Assistant Professor of Surgery at at CUMC

**Physician Assistants, Nurse Practitioners,
and Nurse Coordinators**

Mian Catalano, RDN
Kathryn Pisseri, NP

CENTER FOR METABOLIC AND WEIGHT LOSS SURGERY

- Department of Surgery Faculty
- Affiliated Columbia & Cornell Faculty
- Directors
- PAs, NPs, and Nurse Coordinators
- Coordinators, Administrators, Managers, and Specialists



**Physician Assistants, Nurse Practitioners,
and Nurse Coordinators**

Giovanni Dugay, ANP-C
Eileen Harvey-Coghlan, ANP-C
Nancy Restuccia, RD (dietician)

PEDIATRIC SURGERY

- Department of Surgery Faculty
- Affiliated Columbia & Cornell Faculty
- Directors
- PAs, NPs, and Nurse Coordinators
- Coordinators, Administrators, Managers, and Specialists

Steven Stylianos, MD

Surgeon-in-Chief of the Morgan Stanley Children's Hospital and Division Chief of Pediatric Surgery; Rudolph N Schullinger Professor of Pediatric Surgery at CUMC

Vincent Duron, MD

Assistant Professor of Surgery at CUMC

Angela Kadenhe-Chiweshe, MD

Assistant Professor of Surgery

William Middlesworth, MD, FACS, FAAP

Associate Professor of Surgery and Pediatrics at CUMC; Quality & Patient Safety Chair, Director, Pediatric ECMO and Pediatric Surgical Residency Programs, NYP/Morgan Stanley Children's Hospital

Steven S. Rothenberg, MD

Professor of Clinical Surgery

John N. Schullinger, MD

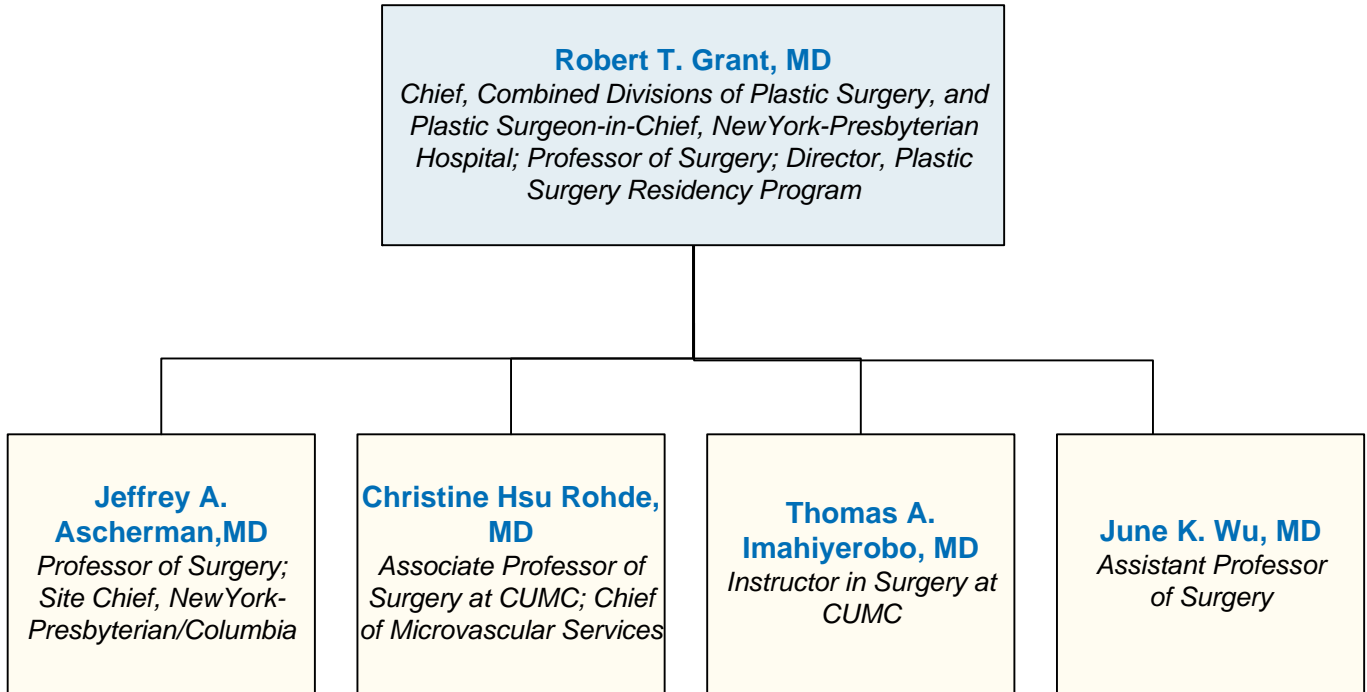
Professor Emeritus of Clinical Surgery

Jeffrey Zitsman, MD

Professor of Surgery at CUMC; Director, Center for Adolescent Bariatric Surgery, Morgan Stanley Children's Hospital

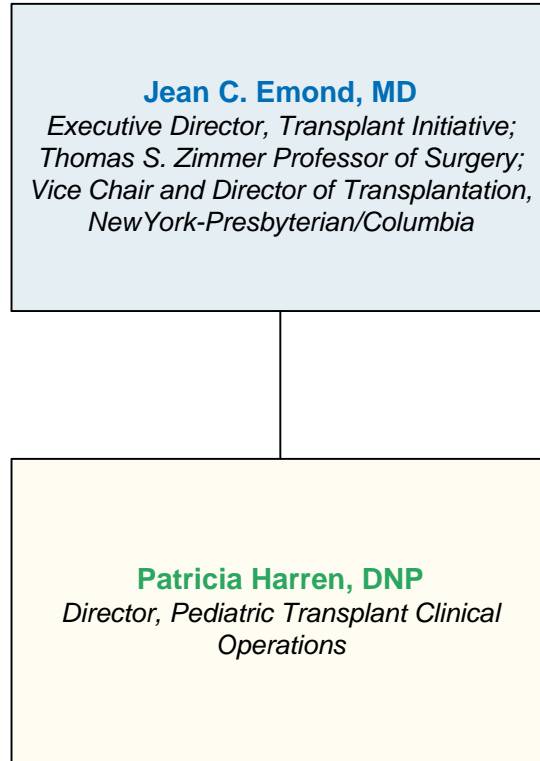
PLASTIC SURGERY

- Department of Surgery Faculty
- Affiliated Columbia & Cornell Faculty
- Directors
- PAs, NPs, and Nurse Coordinators
- Coordinators, Administrators, Managers, and Specialists



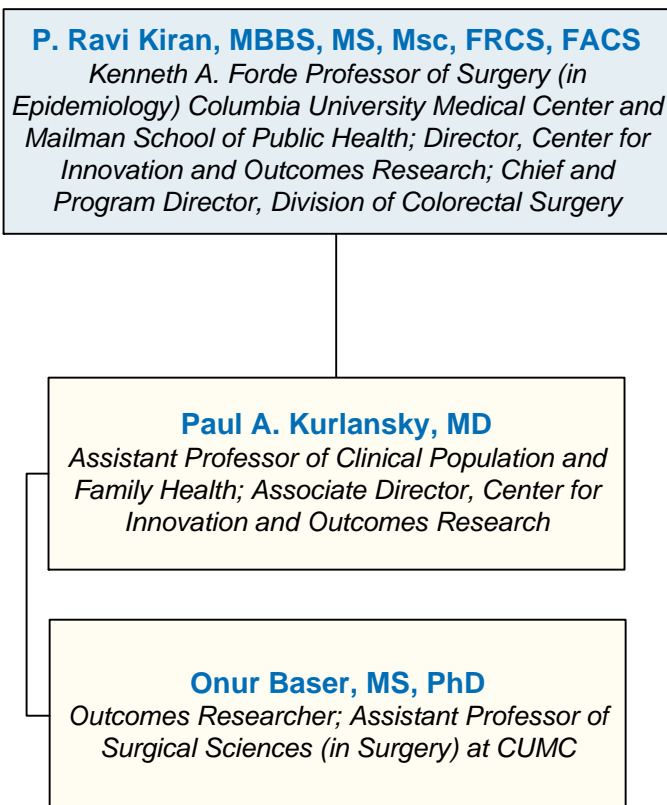
TRANSPLANT INITIATIVE

- Department of Surgery Faculty
- Affiliated Columbia & Cornell Faculty
- Directors
- PAs, NPs, and Nurse Coordinators
- Coordinators, Administrators, Managers, and Specialists



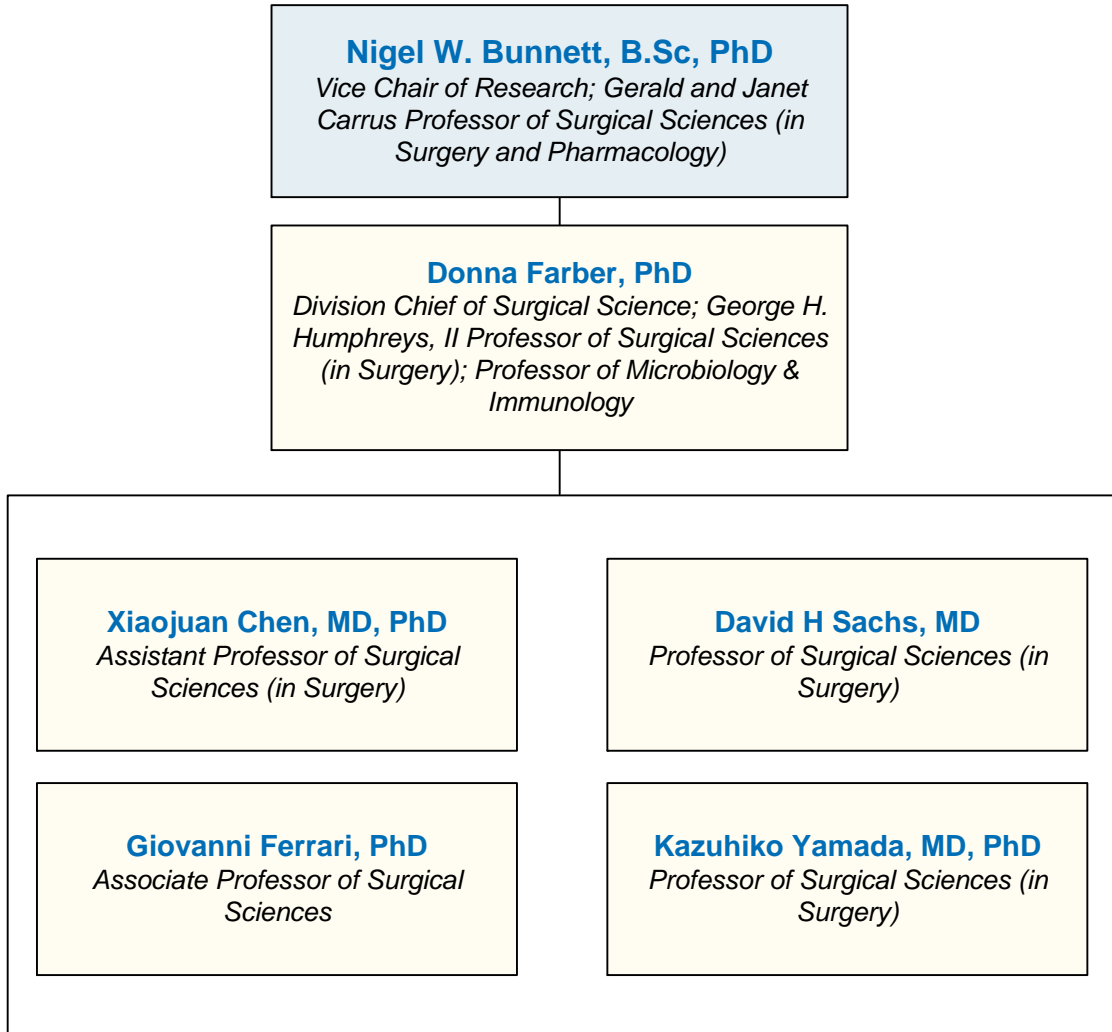
THE CENTER FOR INNOVATION AND OUTCOMES RESEARCH

- Department of Surgery Faculty
- Affiliated Columbia & Cornell Faculty
- Directors
- PAs, NPs, and Nurse Coordinators
- Coordinators, Administrators, Managers, and Specialists



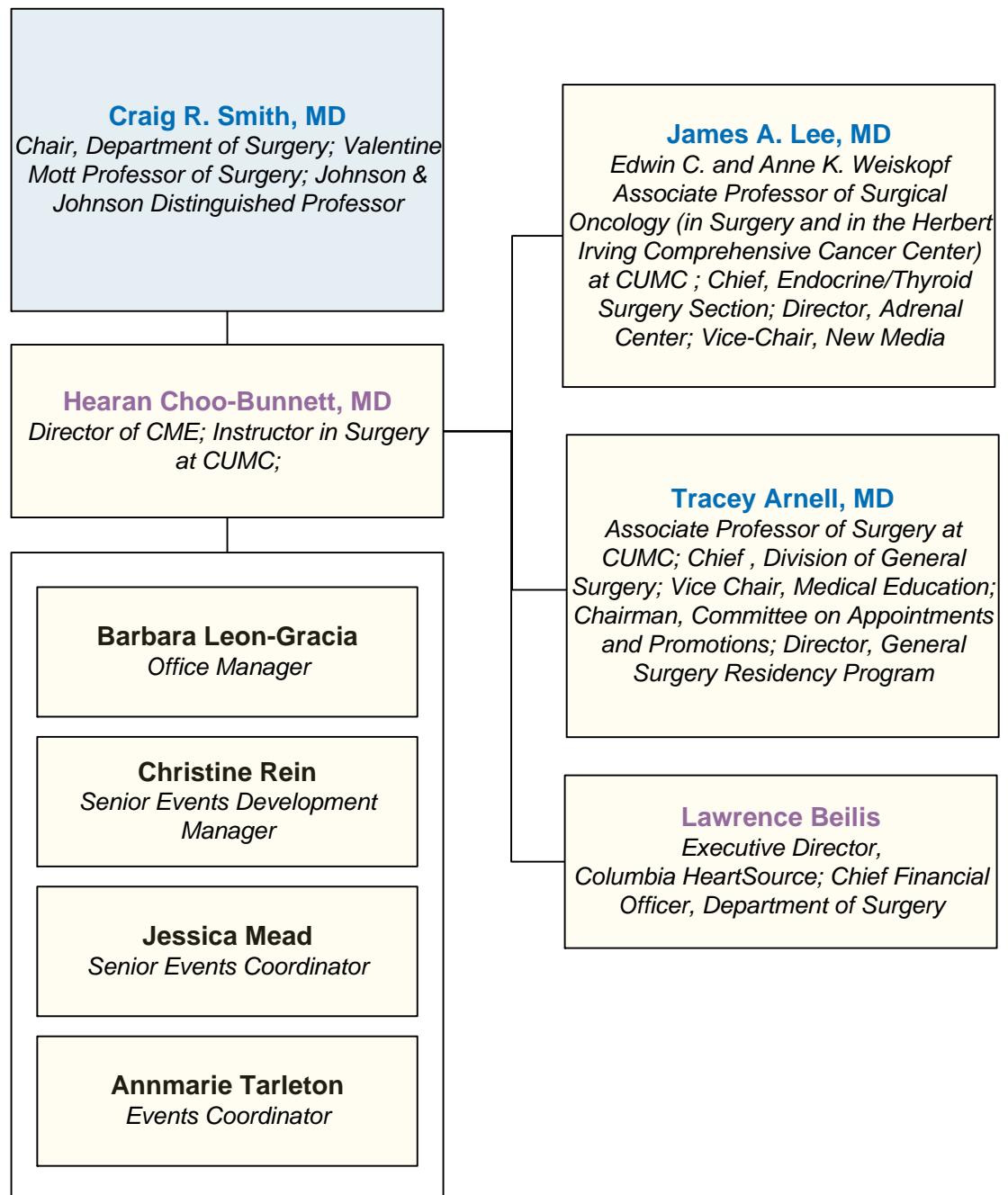
SURGICAL SCIENCE

- Department of Surgery Faculty
- Affiliated Columbia & Cornell Faculty
- Directors
- PAs, NPs, and Nurse Coordinators
- Coordinators, Administrators, Managers, and Specialists



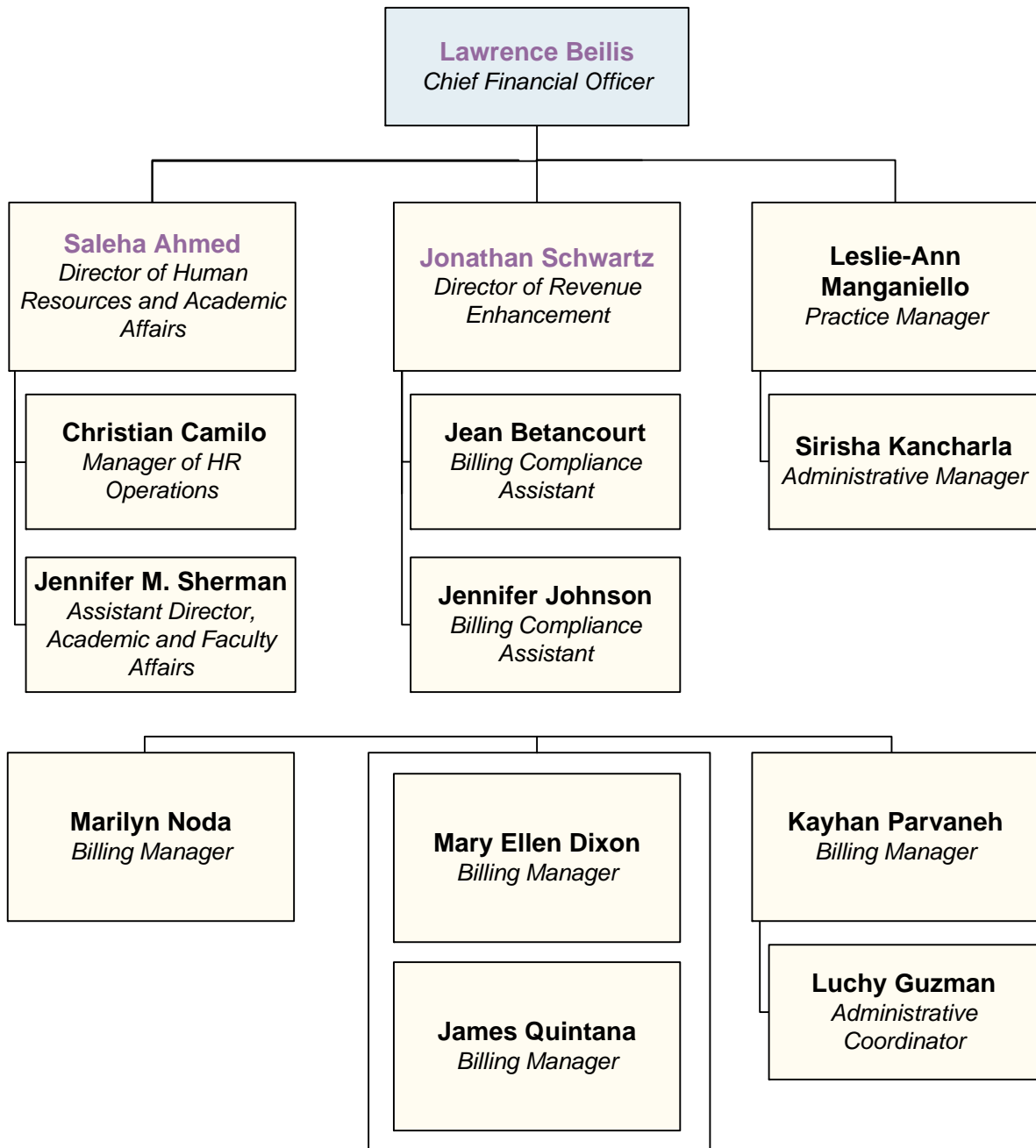
COLUMBIA SURGERY CME

- Department of Surgery Faculty
- Affiliated Columbia & Cornell Faculty
- Directors
- PAs, NPs, and Nurse Coordinators
- Coordinators, Administrators, Managers, and Specialists



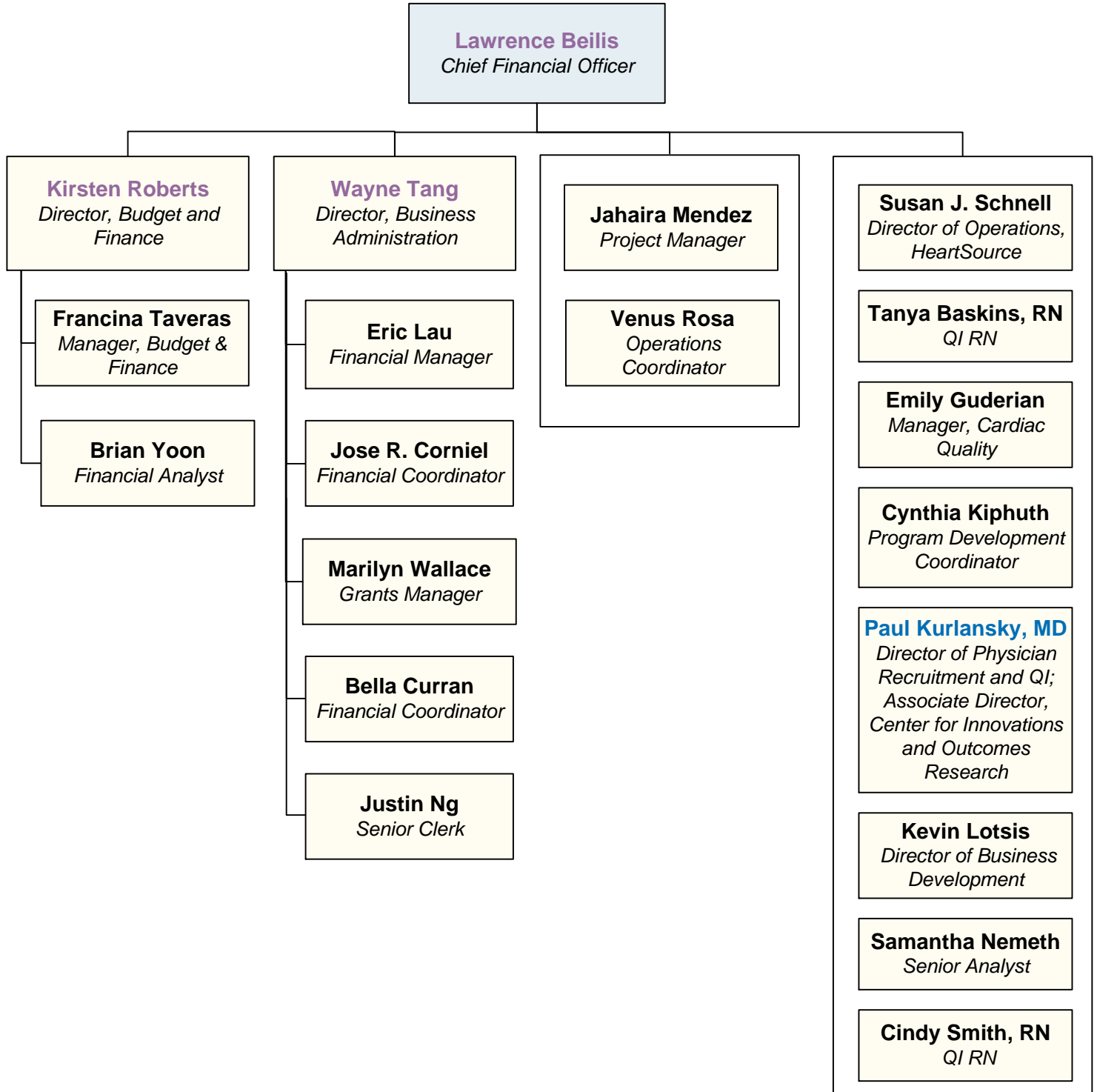
FINANCE OFFICE & OPERATIONS

- Department of Surgery Faculty
- Affiliated Columbia & Cornell Faculty
- Directors
- PAs, NPs, and Nurse Coordinators
- Coordinators, Administrators, Managers, and Specialists



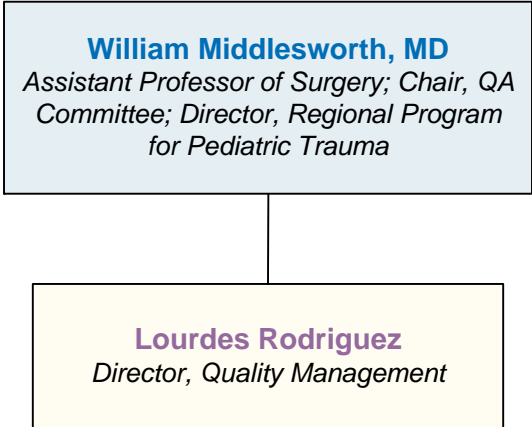
FINANCE OFFICE & OPERATIONS

- Department of Surgery Faculty
- Affiliated Columbia & Cornell Faculty
- Directors
- PAs, NPs, and Nurse Coordinators
- Coordinators, Administrators, Managers, and Specialists



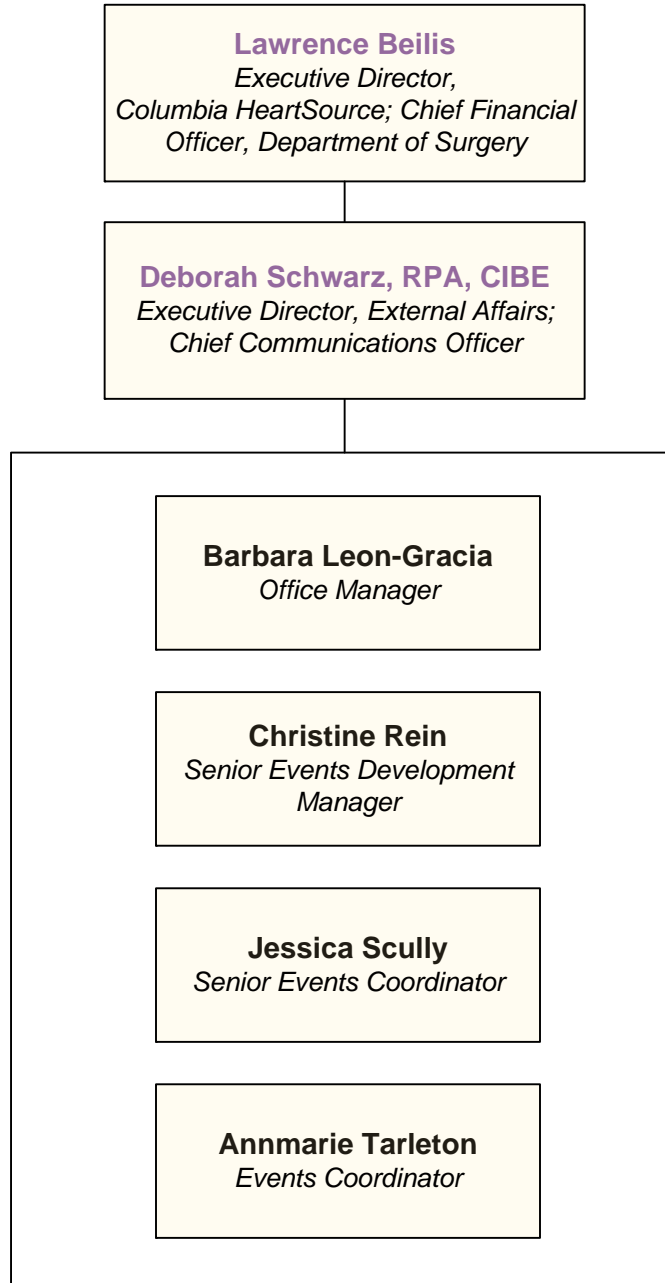
QUALITY MANAGEMENT

- Department of Surgery Faculty
- Affiliated Columbia & Cornell Faculty
- Directors
- PAs, NPs, and Nurse Coordinators
- Coordinators, Administrators, Managers, and Specialists



OFFICE OF EXTERNAL AFFAIRS

- Department of Surgery Faculty
- Affiliated Columbia & Cornell Faculty
- Directors
- PAs, NPs, and Nurse Coordinators
- Coordinators, Administrators, Managers, and Specialists

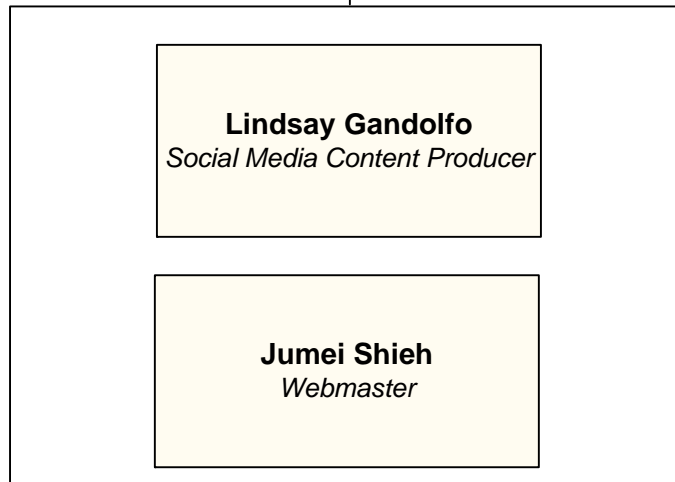


NEW MEDIA

- Department of Surgery Faculty
- Affiliated Columbia & Cornell Faculty
- Directors
- PAs, NPs, and Nurse Coordinators
- Coordinators, Administrators, Managers, and Specialists

James A. Lee, MD
Edwin C. and Anne K. Weiskopf Associate Professor of Surgical Oncology (in Surgery and in the Herbert Irving Comprehensive Cancer Center) at CUMC ; Chief, Endocrine/Thyroid Surgery Section; Director, Adrenal Center; Vice-Chair, New Media

Benjamin Schwartz, MD
Assistant Professor of Medicine (in Surgery); Director, New Media; Chief Creative Officer, Department of Surgery



RESEARCH & INFORMATION SYSTEMS

- Department of Surgery Faculty
- Affiliated Columbia & Cornell Faculty
- Directors
- PAs, NPs, and Nurse Coordinators
- Coordinators, Administrators, Managers, and Specialists

