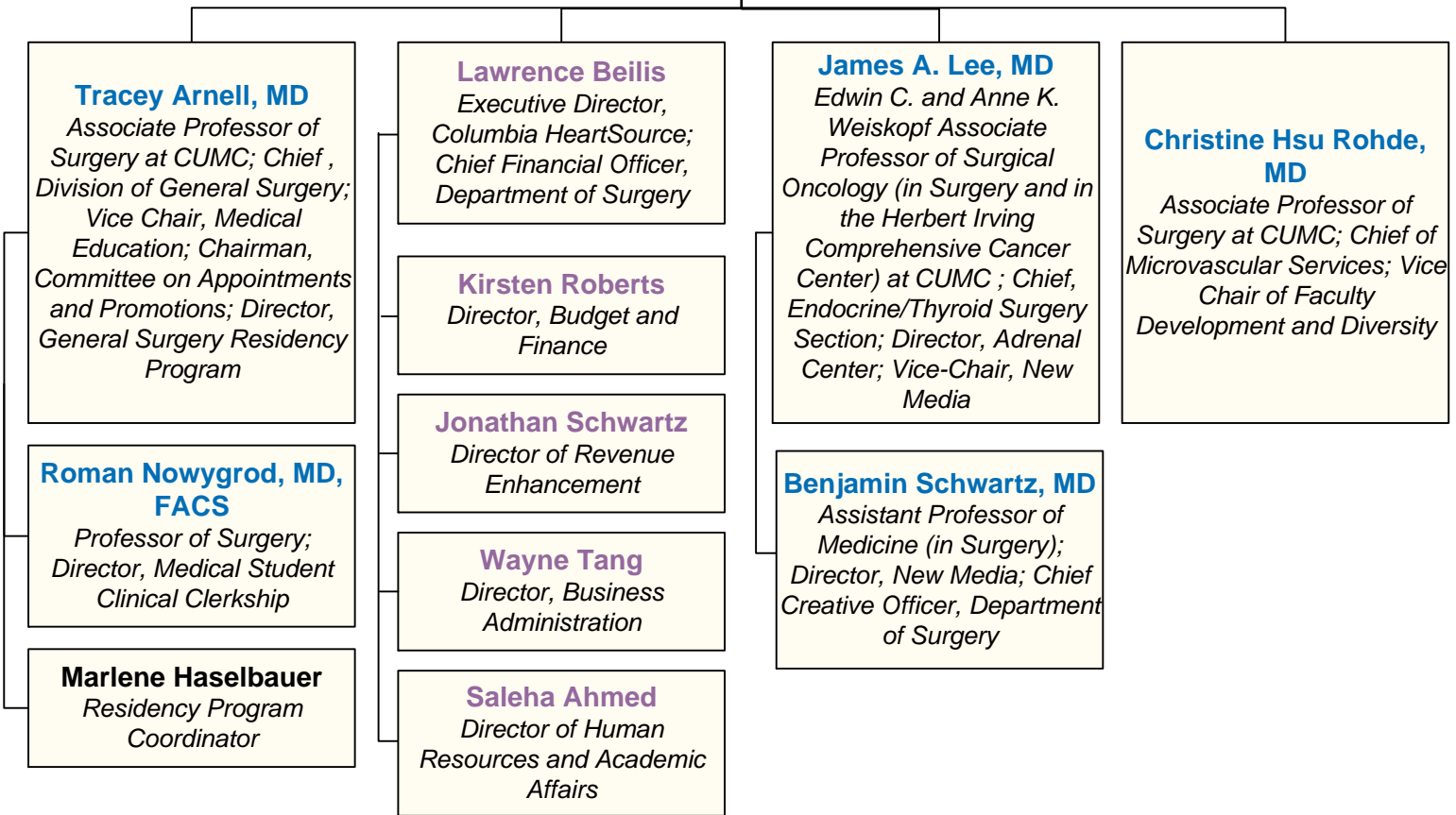


DEPARTMENT OF SURGERY LEADERSHIP

- Department of Surgery Faculty
- Affiliated Columbia & Cornell Faculty
- Directors
- PAs, NPs, and Nurse Coordinators
- Coordinators, Administrators, Managers, and Specialists

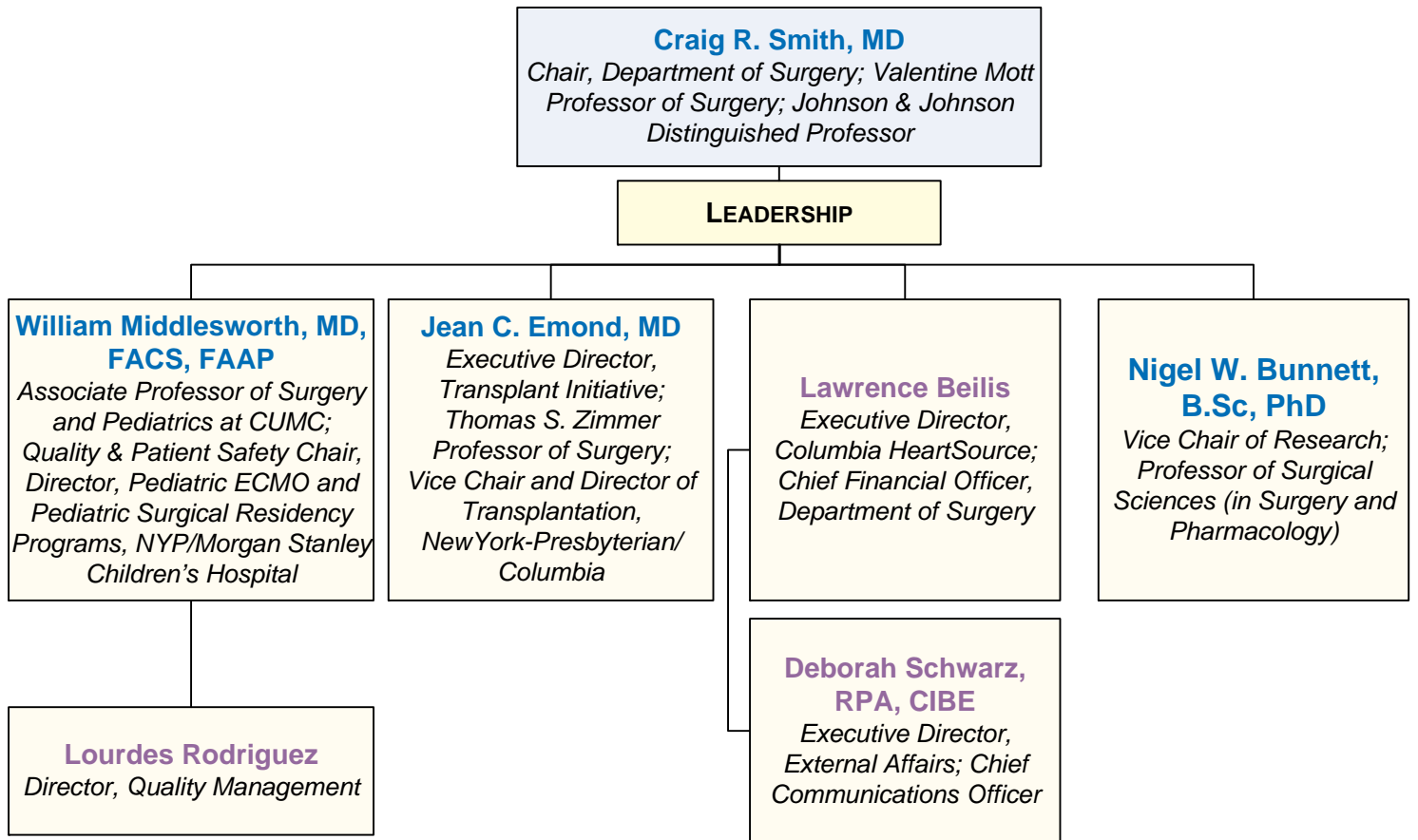
Craig R. Smith, MD
Chair, Department of Surgery; Valentine Mott Professor of Surgery; Johnson & Johnson Distinguished Professor

LEADERSHIP



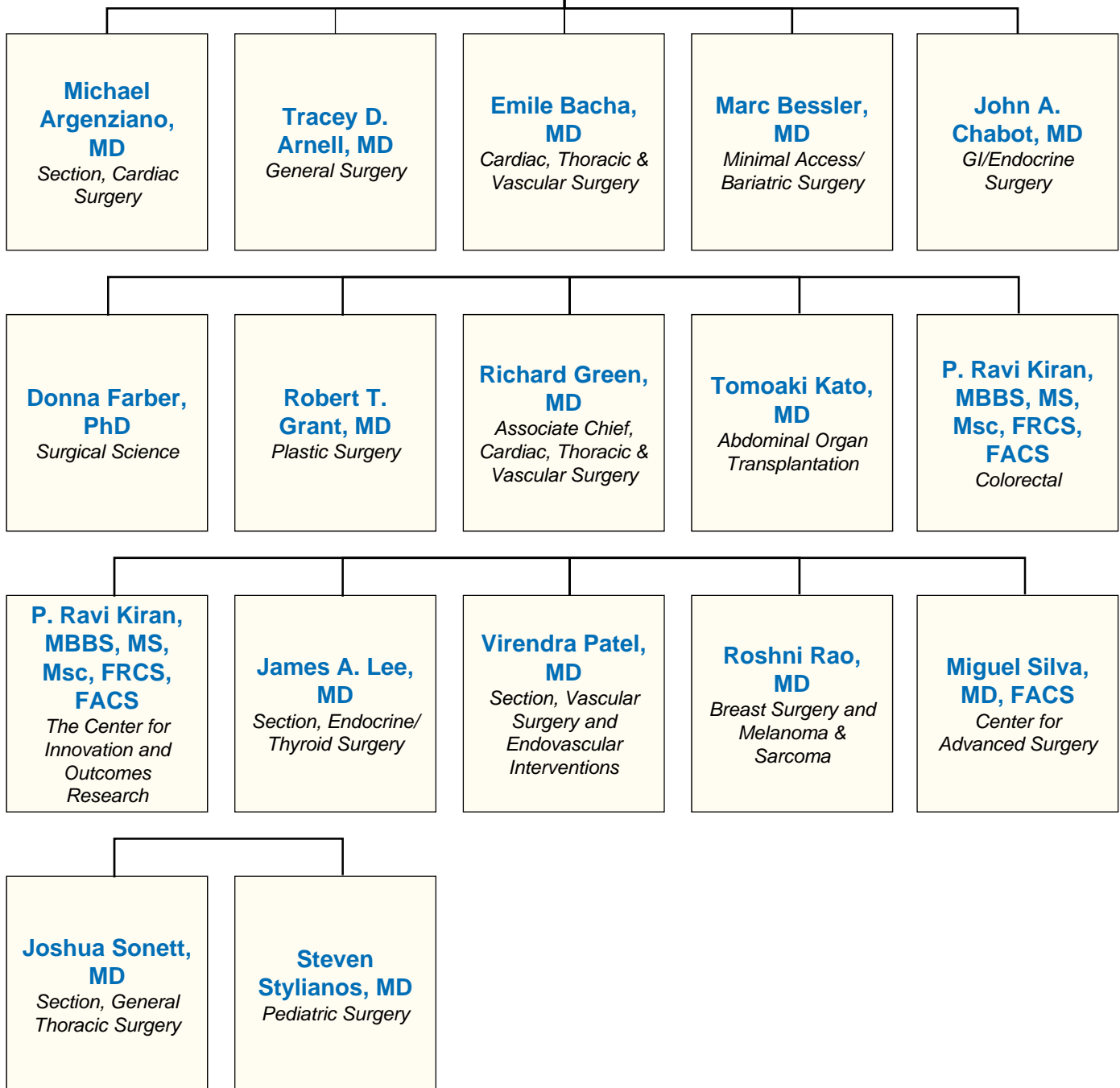
DEPARTMENT OF SURGERY LEADERSHIP

- Department of Surgery Faculty
- Affiliated Columbia & Cornell Faculty
- Directors
- PAs, NPs, and Nurse Coordinators
- Coordinators, Administrators, Managers, and Specialists



DEPARTMENT OF SURGERY LEADERSHIP

DIVISION AND SECTION CHIEFS



ABDOMINAL ORGAN TRANSPLANTATION

Jean C. Emond, MD
Vice Chair & Chief of Transplantation; Thomas S. Zimmer Professor of Surgery

Tomoaki Kato, MD
Chief, Division of Abdominal Organ Transplantation; Edwin C. & Anne K. Weiskopf Professor of Surgical Oncology

Patricia A. Harren, DNP
Director of Clinical Operations; Assistant Professor of Nursing

LIVER ADULT MEDICAL TEAM (DOVE)

LIVER SURGICAL TEAM (KATO)

Lorna M. Dove, MD, MPH
Chief, Division of Clinical Hepatology; Professor of Medicine (in Surgery) at CUMC

Robert S. Brown, Jr., MD, MPH
Clinical Chief, Division of Gastroenterology and Hepatology, Weill Cornell Medical College

Tomoaki Kato, MD
Chief, Division of Abdominal Organ Transplantation; Edwin C. & Anne K. Weiskopf Professor of Surgical Oncology

Alyson N. Fox, MD, MSCE
Medical Director, Living Donor Liver Transplantation; Assistant Professor of Medicine

Arun Jesudian, MD
Assistant Professor of Medicine, Weill Cornell Medical College

Jean C. Emond, MD
Vice Chair & Chief of Transplantation; Thomas S. Zimmer Professor of Surgery

Paul J. Gaglio, MD
Director, Hepatology Outreach; Professor of Medicine (in Surgery) at CUMC

Catherine Lucero, MD
Assistant Professor of Medicine, Weill Cornell Medical College

Adam D. Griesemer, MD
Assistant Professor of Surgery

Elizabeth Verna, MD, MS
Medical Director, Clinical Research; Assistant Professor of Medicine

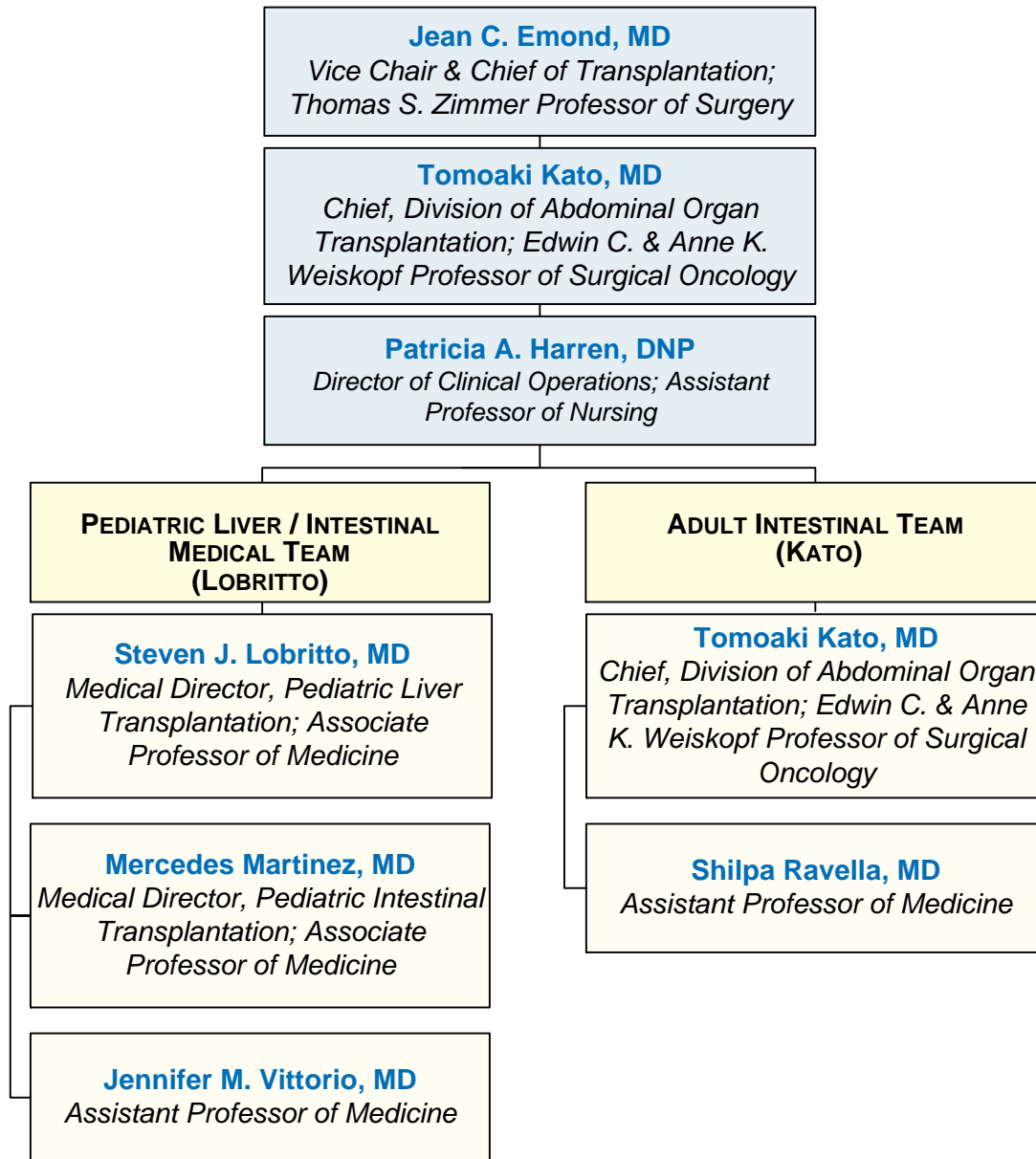
Brett Fortune, MD
Assistant Professor of Medicine, Weill Cornell Medical College

Benjamin Samstein, MD
Chief, Division of Liver Transplantation & Hepatobiliary Surgery, Weill Cornell Medical College

Julia Wattacheril, MD, MPH
Assistant Professor of Medicine

Karim Halazun, MD
Assistant Professor of Surgery, Weill Cornell Medical College

ABDOMINAL ORGAN TRANSPLANTATION

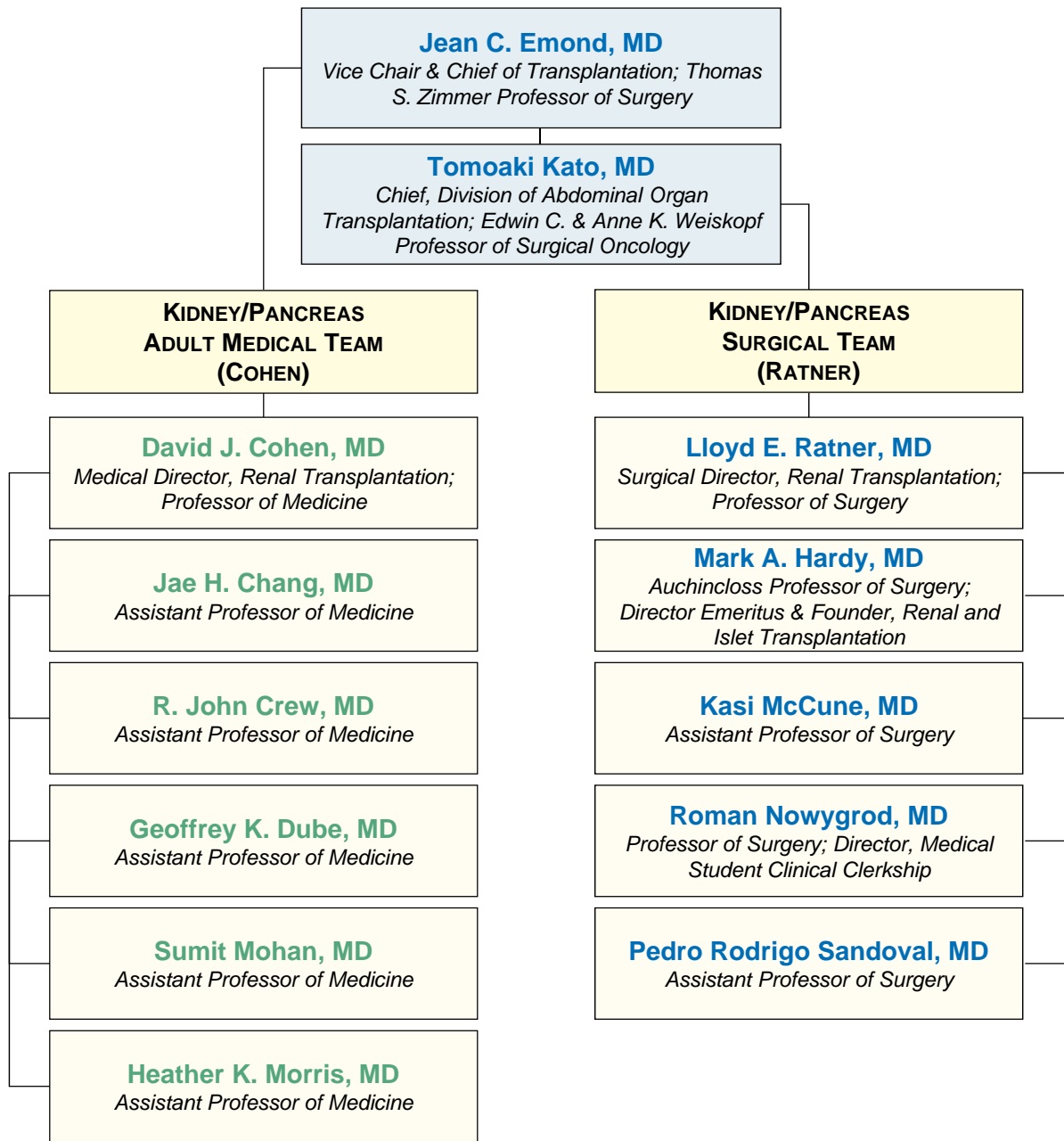


PHYSICIAN ASSISTANTS, NURSE PRACTITIONERS, AND NURSE COORDINATORS

Kristin Abernathy, RN
Lorin Amanda Albrecht PA-C
Janica Barnett, NP
Candace Belmore, RN
Sheila Bradley, NP
Damaris Carriero, NP
Judith Gang, NP
Nicole Golden, NP
Stella Goudie, RN
Patricia A. Harren, DNP

Nicole Kelly, NP
Lauren Kempf, DNP
Calvin Lee, NP
Lisa Lisanti, PA
Monica Nelson, RN
N. Kyla Osborne, NP
Anna Rundle, NP
Veronica Roye, RN
Karin Shears, NP
Monica Velasco, NP

ABDOMINAL ORGAN TRANSPLANTATION



Physician Assistants, Nurse Practitioners, and Nurse Coordinators

Jessica Brown, RN
Maureen Carroll, RN
Leigh-Anne Dale, PA
Jillian Daleo, PA
Moya Gallagher, RN
Erika Fox Green, PA
Agnes Kabiri, RN

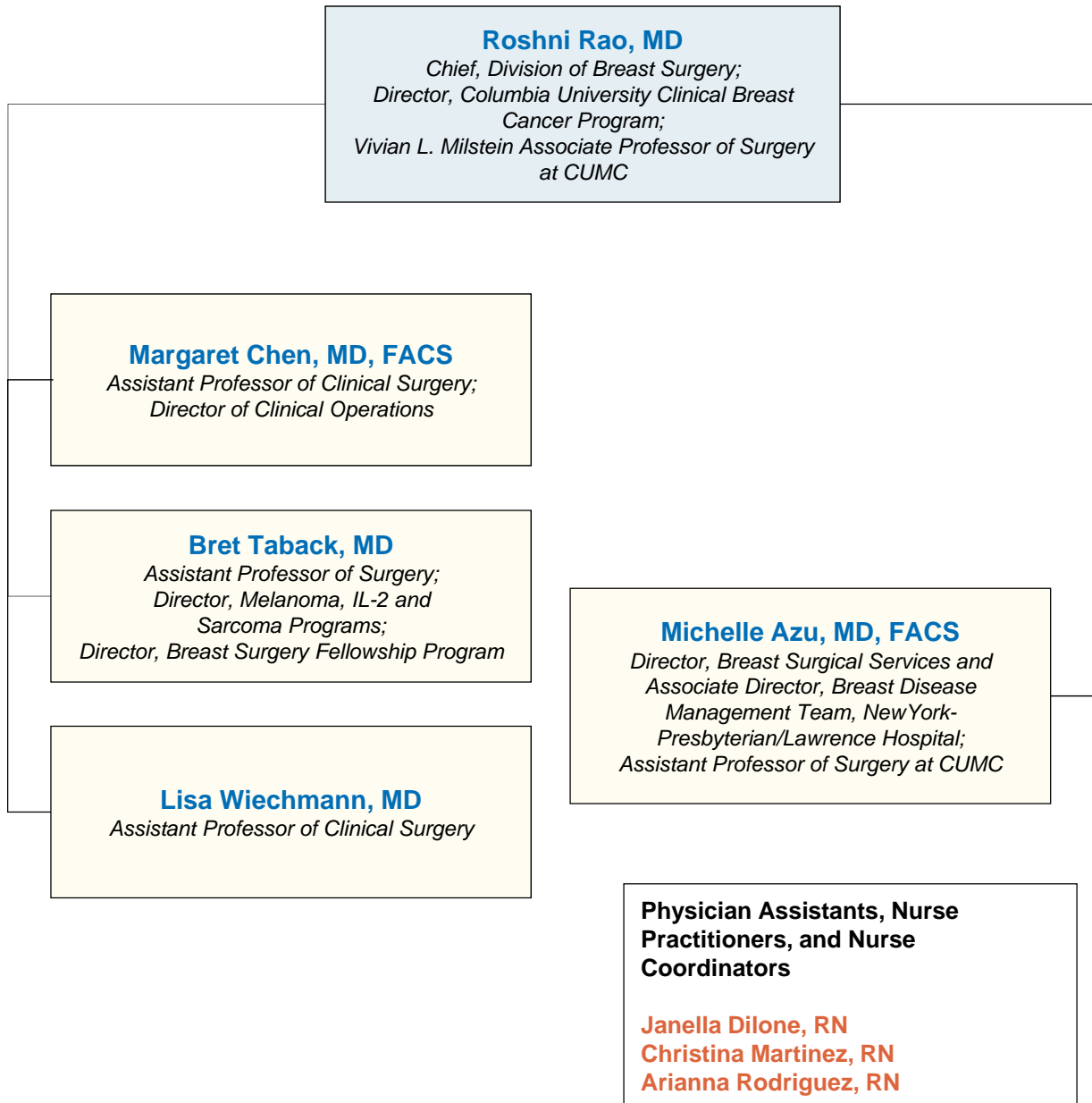
Joan Kelly, RN
Jennifer Lione, RN
Maxine Morris, RN
Kimberly Nelson, PA
Oluremi Williams, NP
Shefali Patel, NP
Brian Runge, RN

Mary Jane Samuels, RN
Karin Sobeck, RN
Karen Stugensky, PA
Ibadete Sulejmani, PA
Jennifer Wexler, RN

Division Administrator: **Megan M. Neville, 646.317.4182**
Referrals: **855.CUSURGE**

BREAST SURGERY AND MELANOMA & SARCOMA

- Department of Surgery Faculty
- Affiliated Columbia & Cornell Faculty
- Directors
- PAs, NPs, and Nurse Coordinators
- Coordinators, Administrators, Managers, and Specialists



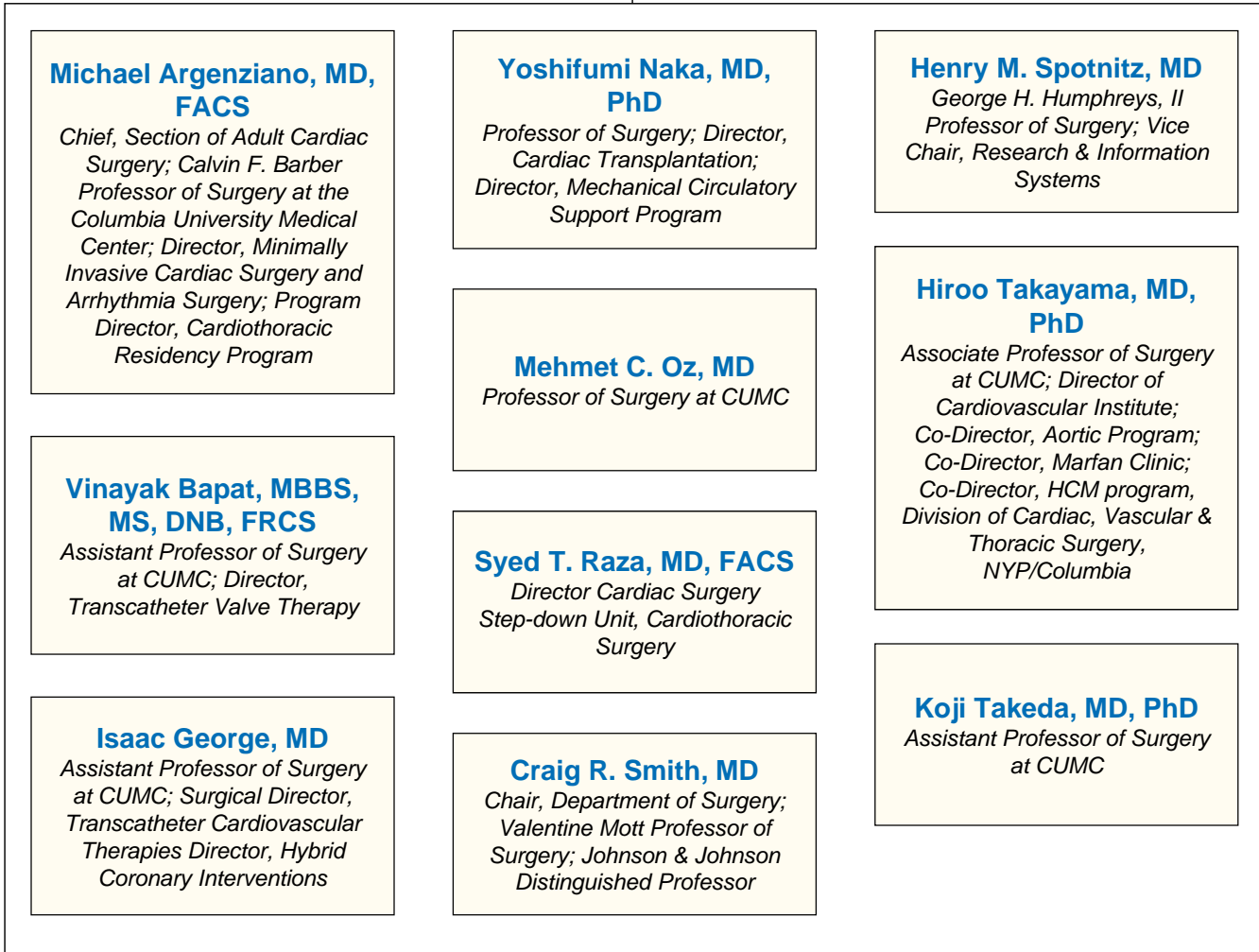
Division Administrator: **Charise Acevedo, 212.342.3911**
Referrals: **855.CUSURGE**

CARDIAC SURGERY

- Department of Surgery Faculty
- Affiliated Columbia & Cornell Faculty
- Directors
- PAs, NPs, and Nurse Coordinators
- Coordinators, Administrators, Managers, and Specialists

Emile A. Bacha, MD
Chief, Division of Cardiac, Thoracic & Vascular Surgery; Calvin F. Barber Professor of Surgery; Director, Congenital and Pediatric Cardiac Surgery, NYP/Morgan Stanley Children's Hospital; Adjunct Professor of Surgery, Weill Cornell Medical College

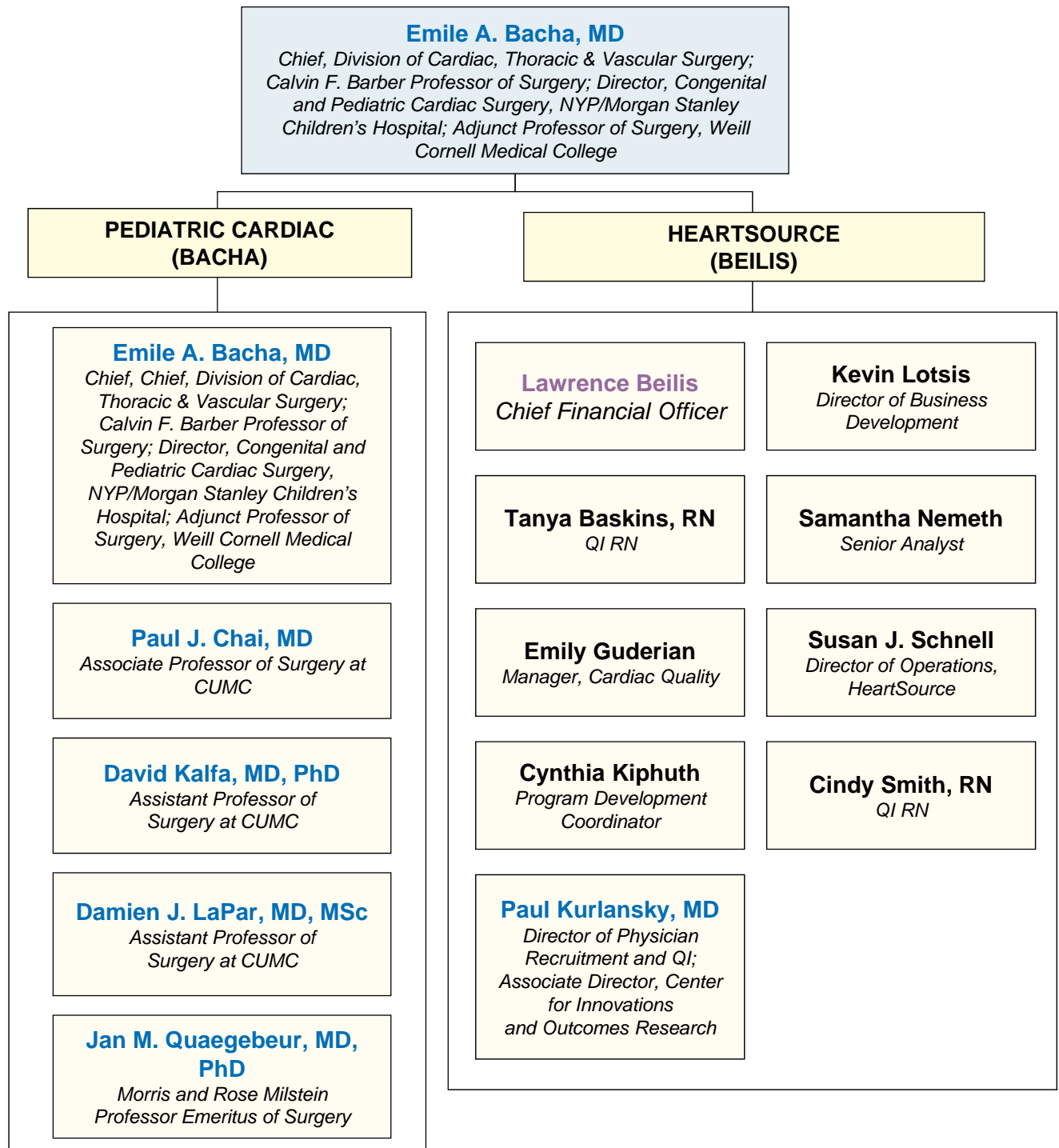
**ADULT CARDIAC
(ARGENZIANO)**



Division Administrator: **Colina Williams, 212.305.6824**
 Referrals: **855.CUSURGE**

CARDIAC SURGERY

- Department of Surgery Faculty
- Affiliated Columbia & Cornell Faculty
- Directors
- PAs, NPs, and Nurse Coordinators
- Coordinators, Administrators, Managers, and Specialists



Division Administrator: **Colina Williams, 212.305.6824**
Referrals: **855.CUSURGE**

CARDIAC SURGERY

- Department of Surgery Faculty
- Affiliated Columbia & Cornell Faculty
- Directors
- PAs, NPs, and Nurse Coordinators
- Coordinators, Administrators, Managers, and Specialists

Physician Assistants, Nurse Practitioners, and Nurse Coordinators

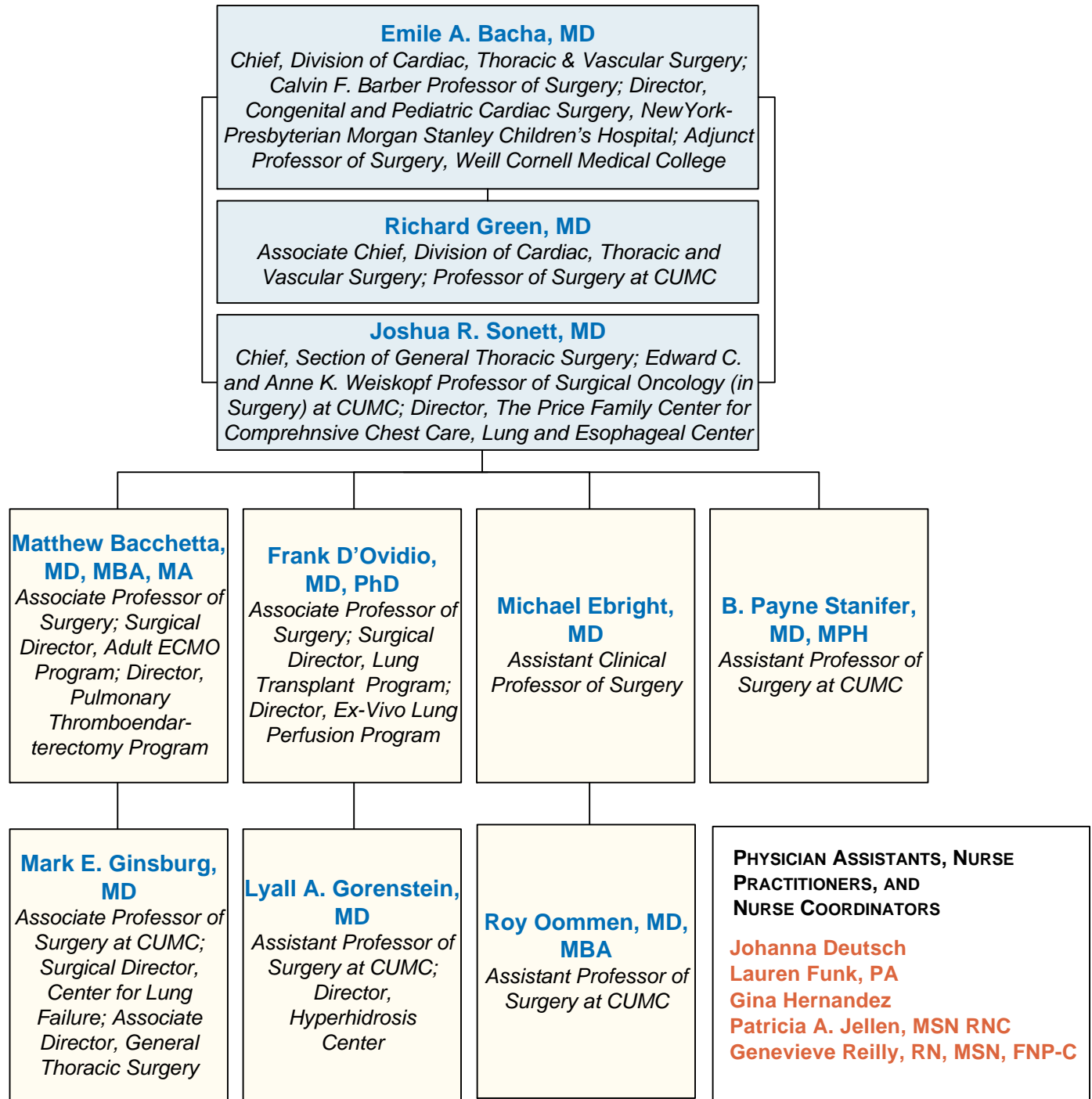
Ashley Allison
Laura Altman, PA
Laura Antonelli
Krystal Arango
Marisa Ayvaliotis
Eric Beninghof, PA
Jennifer Bricker
Sarah Boss, PA
Katelyn Buckley
Ying Yu Chan, PA
Allison Chang
Autumn Chim, PA
Tiffany Cina
Emily Clark, PA
Tom Cosola
Jenna Constantino

Chris Coughlin
Brad Crerar, PA
Nicole Cruz, PA
Diane DeMartino, PA
Jimmy Doolittle, PA
Marybeth Duffy, NP
Jessica Fox, PA
George Gibbons, PA
Linda Gojcaj
Jonathan Halasan
Jamie Hannigan
Jacquelyn Klein, PA
Allan Mariano
Devin McCoubry
Alexis Michalski
Jessica Panarella

Janey Quinn
Dana Reed, NP
Adele Rockett
Mindi Rodgers, PA
Briana Rubilotta
Alyssa Sarro, PA
Debbie Savarese
Maryann Sous, PA
An Tran
Ken Van Ora
Davide Volpe
Elizabeth Wist, PA
Emmy Xhemali

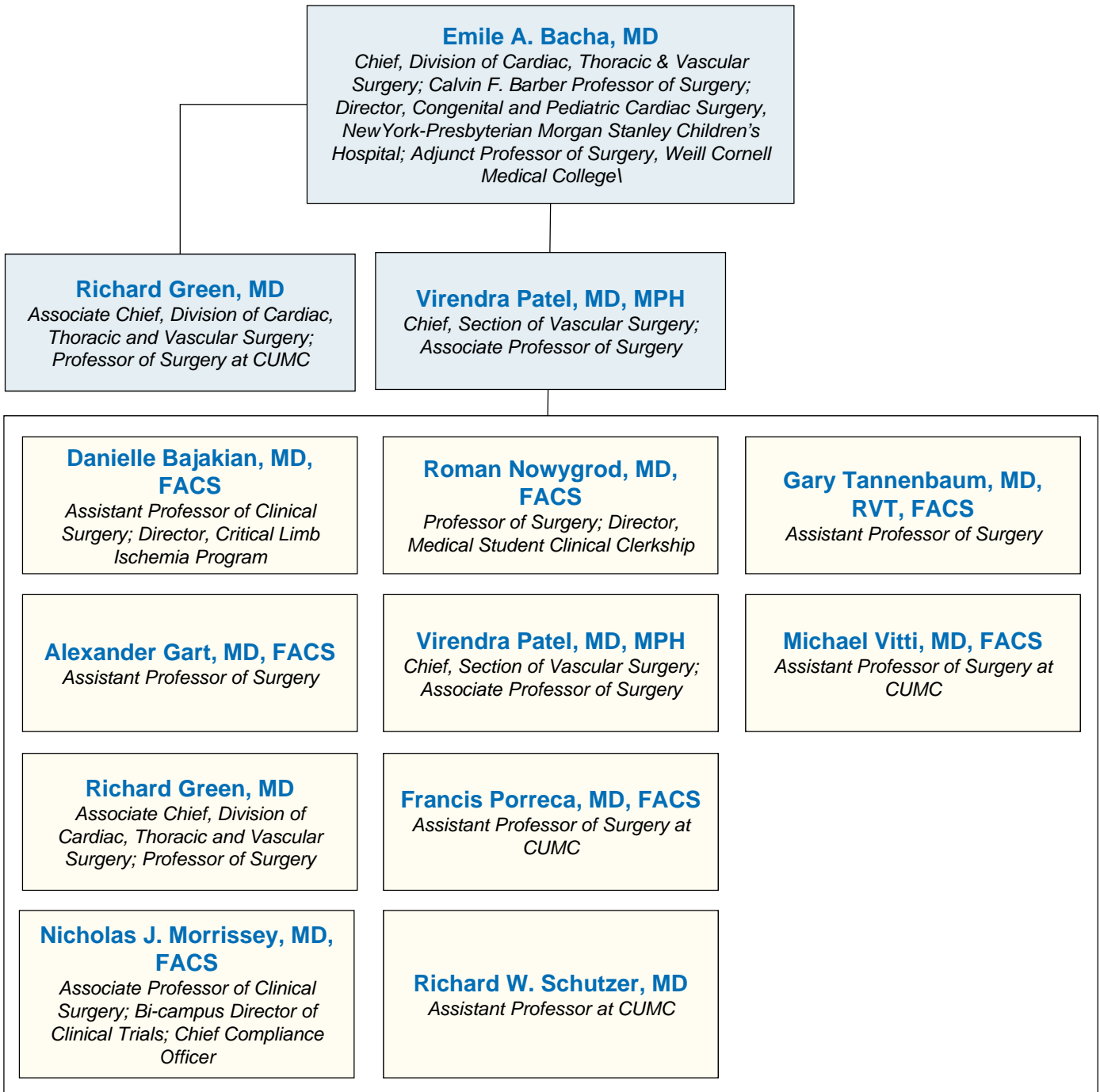
THORACIC SURGERY

- Department of Surgery Faculty
- Affiliated Columbia & Cornell Faculty
- Directors
- PAs, NPs, and Nurse Coordinators
- Coordinators, Administrators, Managers, and Specialists



VASCULAR SURGERY AND ENDOVASCULAR INTERVENTIONS

- Department of Surgery Faculty
- Affiliated Columbia & Cornell Faculty
- Directors
- PAs, NPs, and Nurse Coordinators
- Coordinators, Administrators, Managers, and Specialists



Division Administrator: **Ana Rosario and Yesenia Suarez, 212.305.1028**
Information: 212.342.3255
Referrals: 855.CUSURGE

COLORECTAL SURGERY

- Department of Surgery Faculty
- Affiliated Columbia & Cornell Faculty
- Directors
- PAs, NPs, and Nurse Coordinators
- Coordinators, Administrators, Managers, and Specialists

P. Ravi Kiran, MBBS, MS, Msc, FRCS, FACS
*Kenneth A. Forde Professor of Surgery (in Epidemiology),
Columbia University Medical Center and Mailman School of Public
Health; Director, Center for Innovation and Outcomes Research;
Chief and Program Director, Division of Colorectal Surgery*

**Daniel L. Feingold, MD, FACS,
FASCRS**

*Edelman-Jarislowsky Associate
Professor of Surgery at CUMC*

J. Mark Kiely, MD, FACS

Assistant Professor of Surgery at CUMC

Daniel Geisler, MD

Assistant Professor of Surgery at CUMC

**Steven A. Lee-Kong, MD,
FACS, FASCRS**

Assistant Professor of Surgery at CUMC

Deborah S. Keller, MD, MS

Assistant Professor of Surgery at CUMC

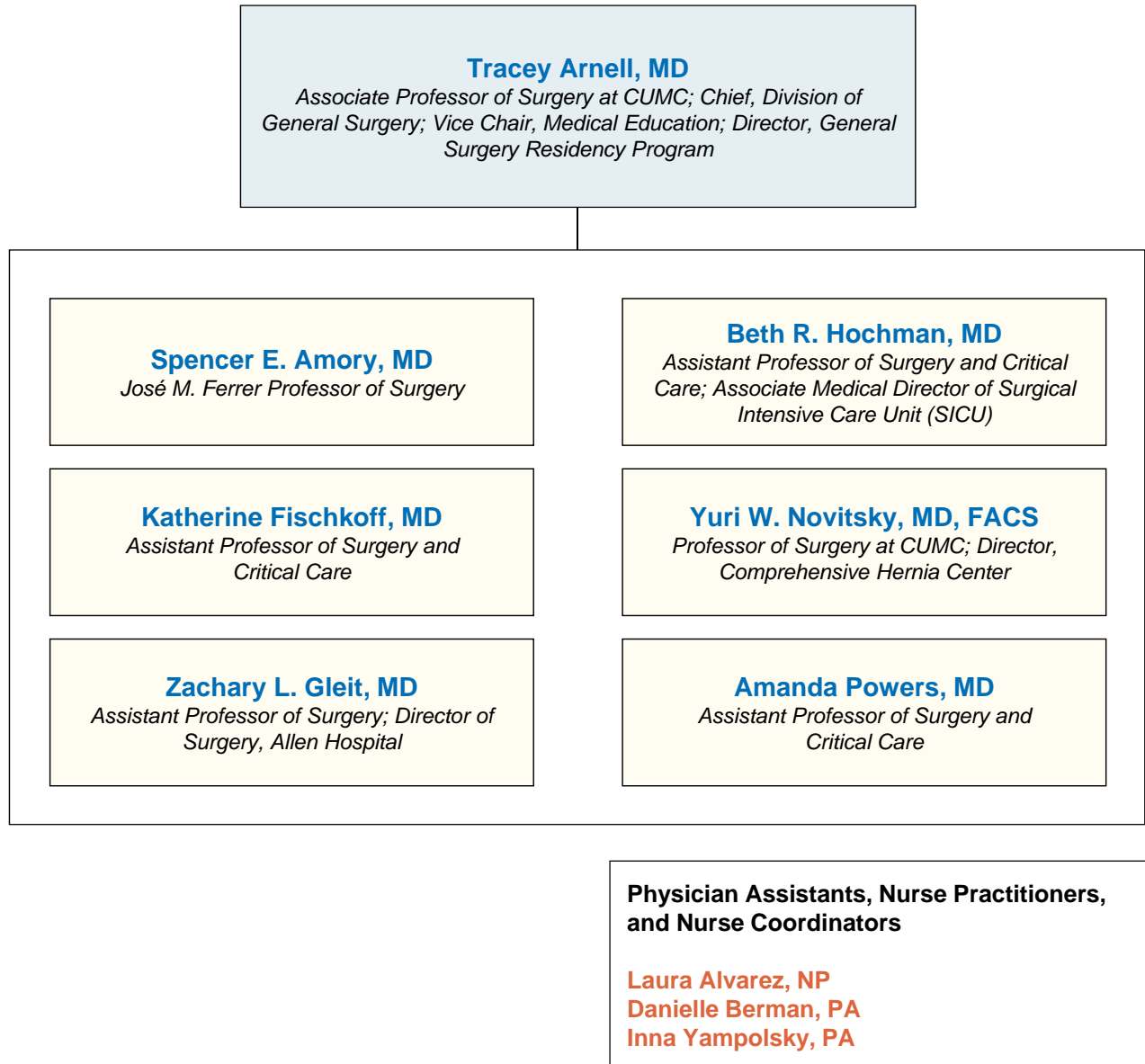
Physician Assistants, Nurse Practitioners, and Nurse Coordinators

Jeanne de Korte, NP
Vanessa Marra, RN, BSN, CWOCN, CMSRN
Jessica Rein, PA

Erin Testerman, RN, BSN, CWOCN
Sabrina Toledano, RD, CSO, CDN
Anna Varghese, NP

GENERAL SURGERY

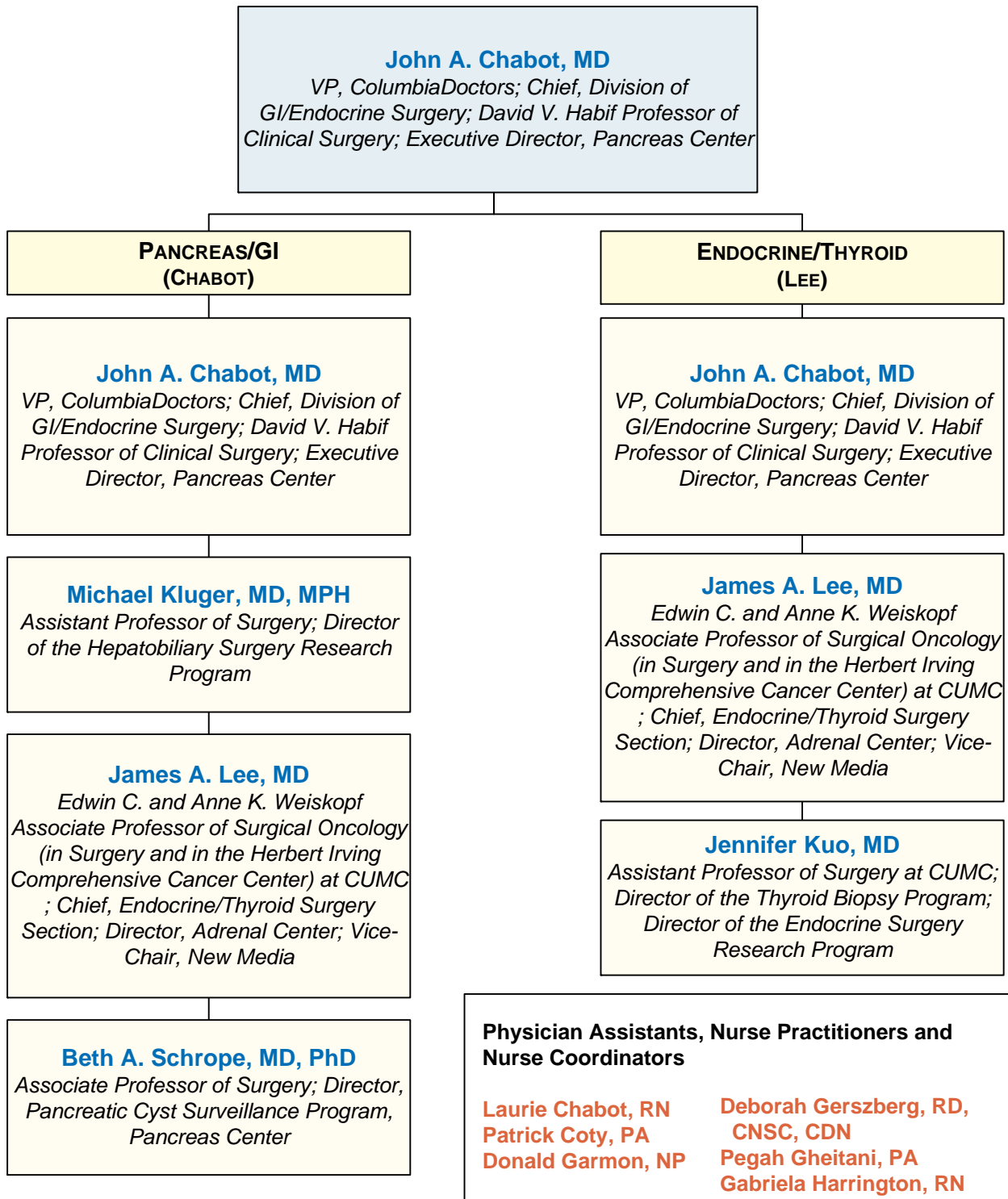
- Department of Surgery Faculty
- Affiliated Columbia & Cornell Faculty
- Directors
- PAs, NPs, and Nurse Coordinators
- Coordinators, Administrators, Managers, and Specialists



Division Administrator: **Ana C. Rosario, 212.305.1976**
Referrals: **855.CUSURGE**

GI/ENDOCRINE SURGERY

- Department of Surgery Faculty
- Affiliated Columbia & Cornell Faculty
- Directors
- PAs, NPs, and Nurse Coordinators
- Coordinators, Administrators, Managers, and Specialists



Division Administrator: **Francine Castillo, 212.342.3677**
Referrals: **855.CUSURGE**

CENTER FOR ADVANCED SURGERY NEW YORK-PRESBYTERIAN/LAWRENCE HOSPITAL

- Department of Surgery Faculty
- Affiliated Columbia & Cornell Faculty
- Directors
- PAs, NPs, and Nurse Coordinators
- Coordinators, Administrators, Managers, and Specialists

Miguel Silva, MD, FACS
*Assistant Professor of Surgery at CUMC;
Director, Center for Advanced Surgery,
Lawrence Hospital*

John-Paul Salvatore Bellistri, MD
Assistant Professor of Surgery at CUMC

Allen Chefitz, MD
Assistant Professor of Surgery at CUMC

Arpan Goel, MD
Assistant Professor of Surgery at at CUMC

**Physician Assistants, Nurse Practitioners,
and Nurse Coordinators**

Mian Catalano, RDN
Kathryn Pisseri, NP

CENTER FOR METABOLIC AND WEIGHT LOSS SURGERY

- Department of Surgery Faculty
- Affiliated Columbia & Cornell Faculty
- Directors
- PAs, NPs, and Nurse Coordinators
- Coordinators, Administrators, Managers, and Specialists



**Physician Assistants, Nurse Practitioners,
and Nurse Coordinators**

Giovanni Dugay, ANP-C
Eileen Harvey-Coghlan, ANP-C
Nancy Restuccia, RD (dietician)

PEDIATRIC SURGERY

- Department of Surgery Faculty
- Affiliated Columbia & Cornell Faculty
- Directors
- PAs, NPs, and Nurse Coordinators
- Coordinators, Administrators, Managers, and Specialists

Steven Stylianos, MD

Surgeon-in-Chief of the Morgan Stanley Children's Hospital and Division Chief of Pediatric Surgery; Rudolph N Schullinger Professor of Pediatric Surgery at CUMC

Vincent Duron, MD

Assistant Professor of Surgery at CUMC

Angela Kadenhe-Chiweshe, MD

Assistant Professor of Surgery

William Middlesworth, MD, FACS, FAAP

Associate Professor of Surgery and Pediatrics at CUMC; Quality & Patient Safety Chair, Director, Pediatric ECMO and Pediatric Surgical Residency Programs, NYP/Morgan Stanley Children's Hospital

Steven S. Rothenberg, MD

Professor of Clinical Surgery

John N. Schullinger, MD

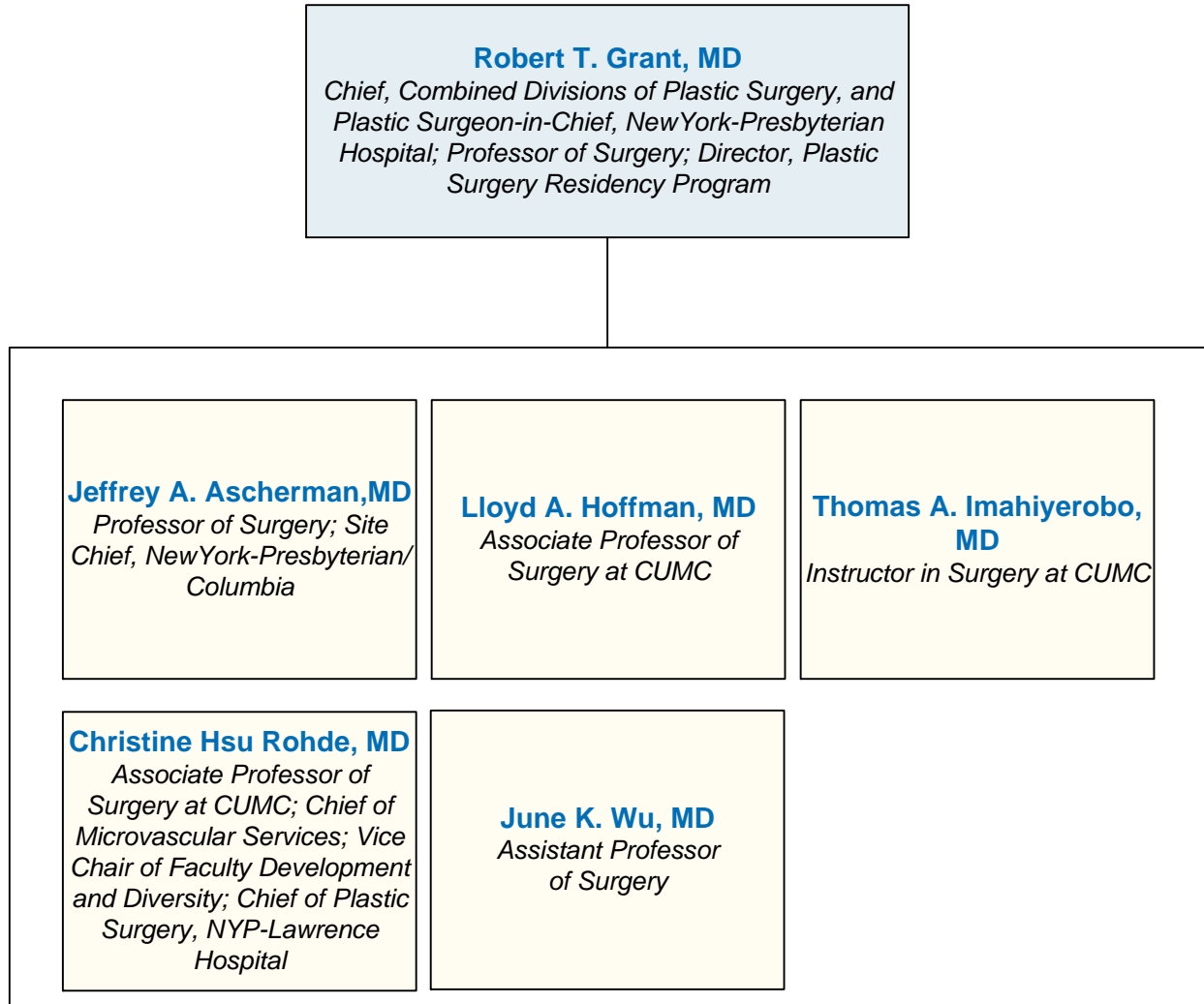
Professor Emeritus of Clinical Surgery

Jeffrey Zitsman, MD

Professor of Surgery at CUMC; Director, Center for Adolescent Bariatric Surgery, Morgan Stanley Children's Hospital

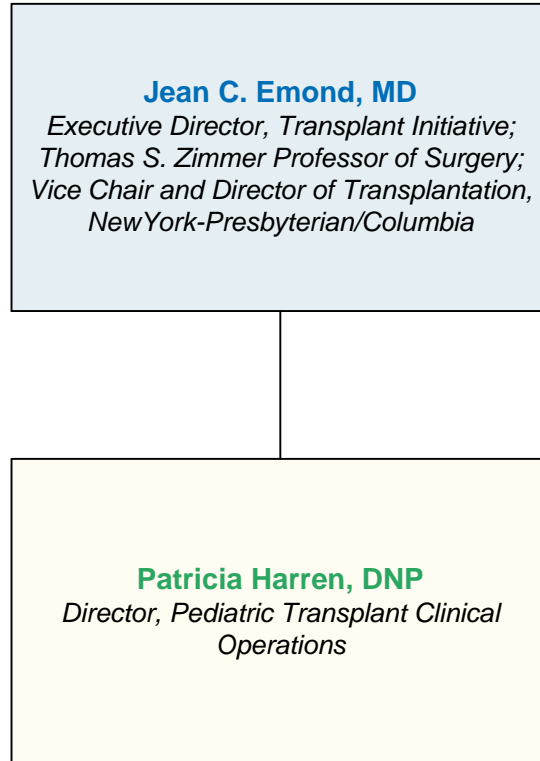
PLASTIC SURGERY

- Department of Surgery Faculty
- Affiliated Columbia & Cornell Faculty
- Directors
- PAs, NPs, and Nurse Coordinators
- Coordinators, Administrators, Managers, and Specialists



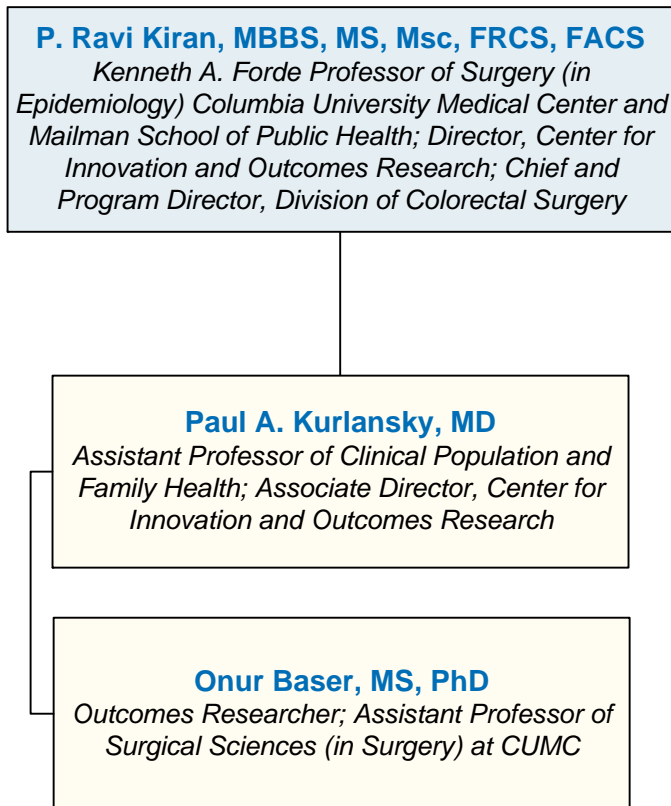
TRANSPLANT INITIATIVE

- Department of Surgery Faculty
- Affiliated Columbia & Cornell Faculty
- Directors
- PAs, NPs, and Nurse Coordinators
- Coordinators, Administrators, Managers, and Specialists



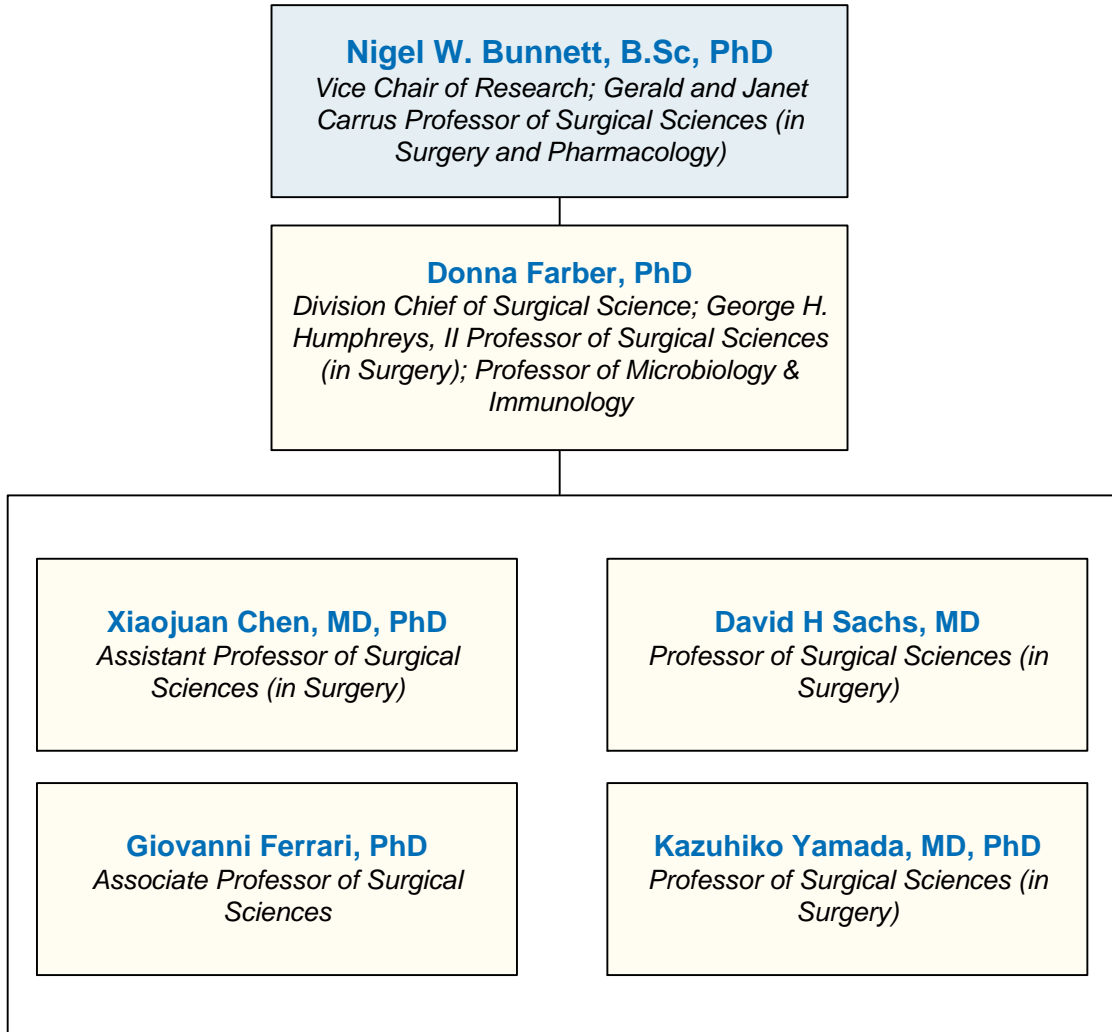
THE CENTER FOR INNOVATION AND OUTCOMES RESEARCH

- Department of Surgery Faculty
- Affiliated Columbia & Cornell Faculty
- Directors
- PAs, NPs, and Nurse Coordinators
- Coordinators, Administrators, Managers, and Specialists



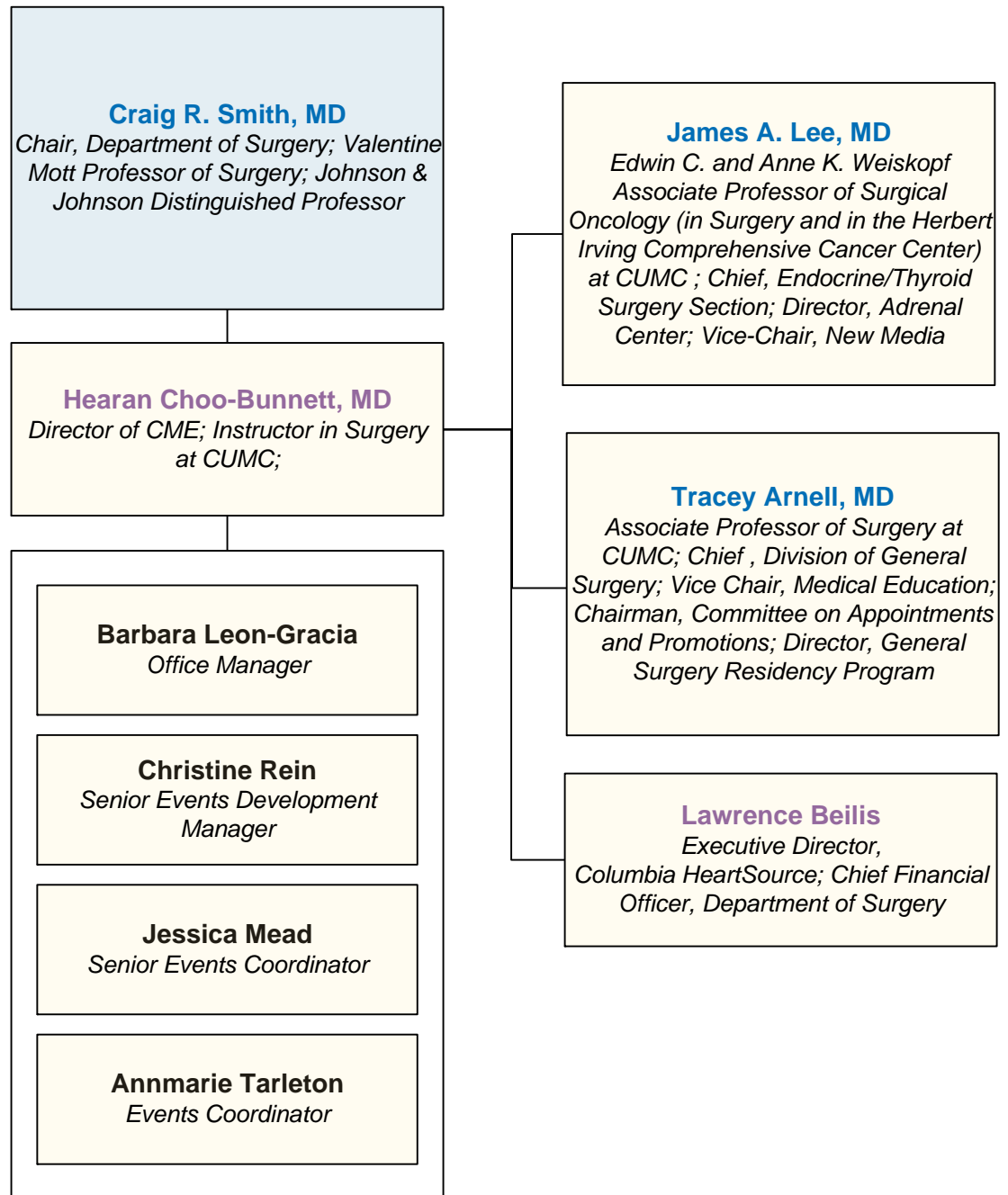
SURGICAL SCIENCE

- Department of Surgery Faculty
- Affiliated Columbia & Cornell Faculty
- Directors
- PAs, NPs, and Nurse Coordinators
- Coordinators, Administrators, Managers, and Specialists



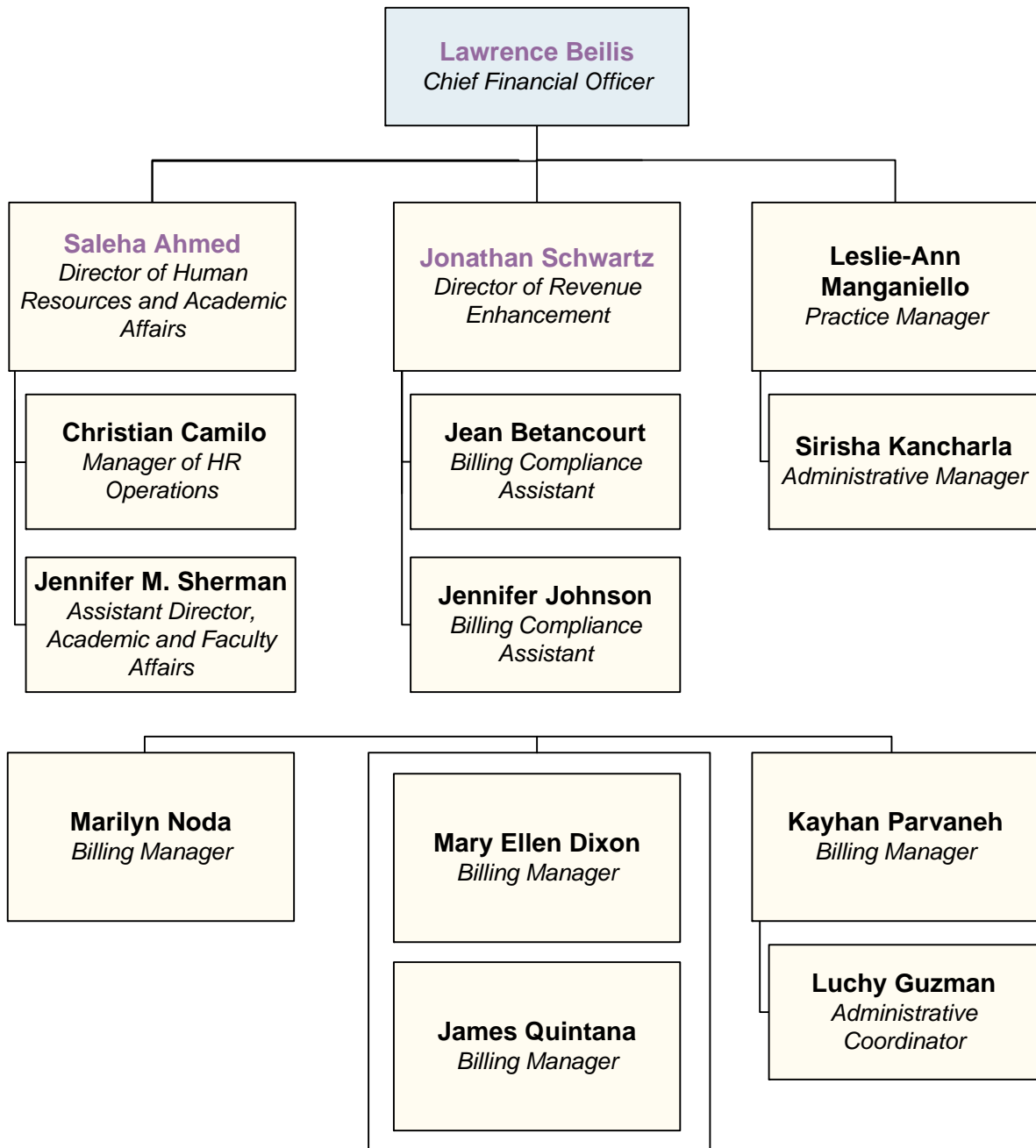
COLUMBIA SURGERY CME

- Department of Surgery Faculty
- Affiliated Columbia & Cornell Faculty
- Directors
- PAs, NPs, and Nurse Coordinators
- Coordinators, Administrators, Managers, and Specialists



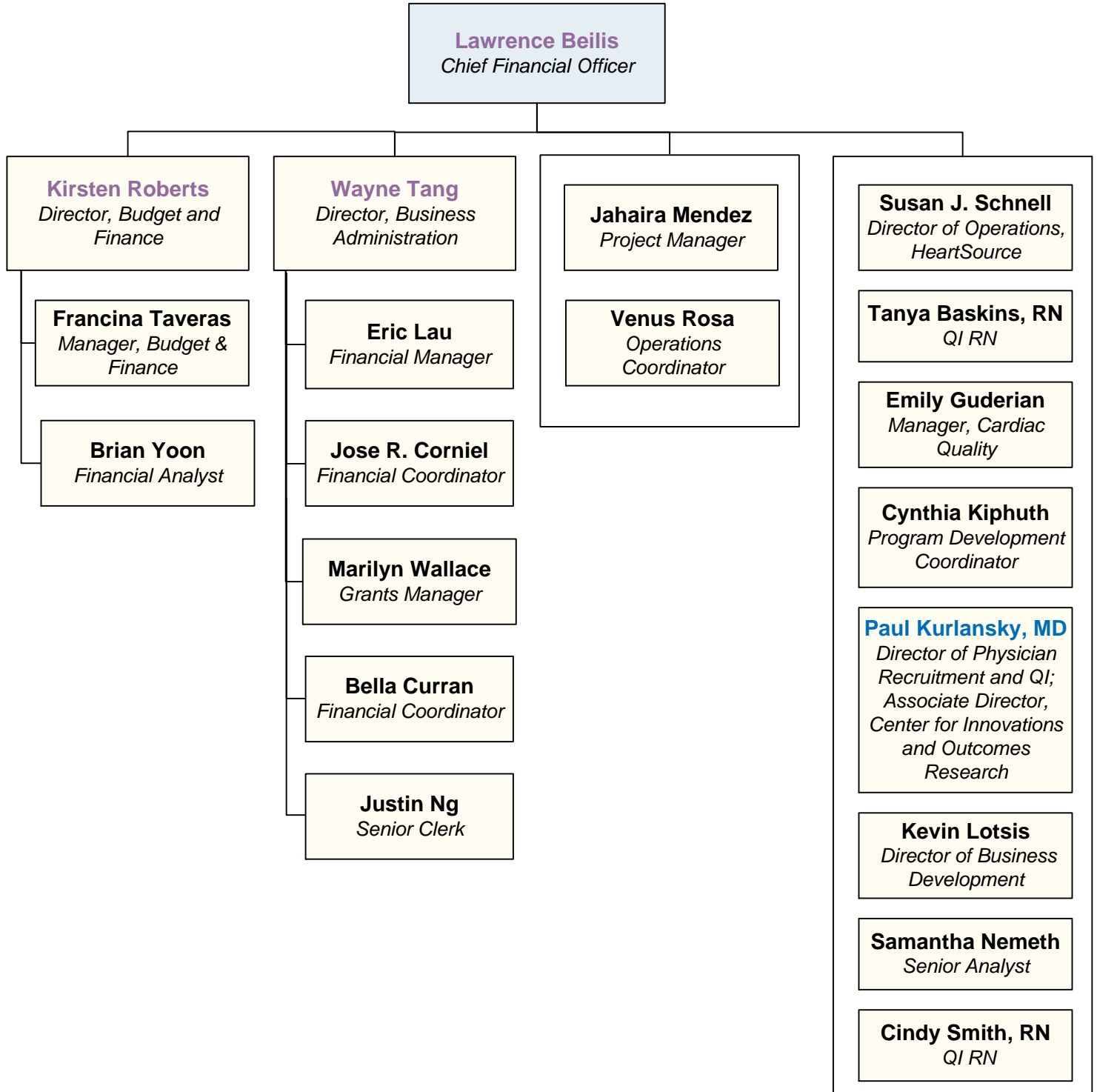
FINANCE OFFICE & OPERATIONS

- Department of Surgery Faculty
- Affiliated Columbia & Cornell Faculty
- Directors
- PAs, NPs, and Nurse Coordinators
- Coordinators, Administrators, Managers, and Specialists



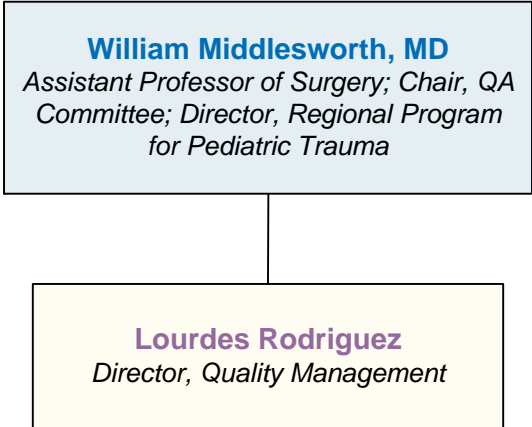
FINANCE OFFICE & OPERATIONS

- Department of Surgery Faculty
- Affiliated Columbia & Cornell Faculty
- Directors
- PAs, NPs, and Nurse Coordinators
- Coordinators, Administrators, Managers, and Specialists



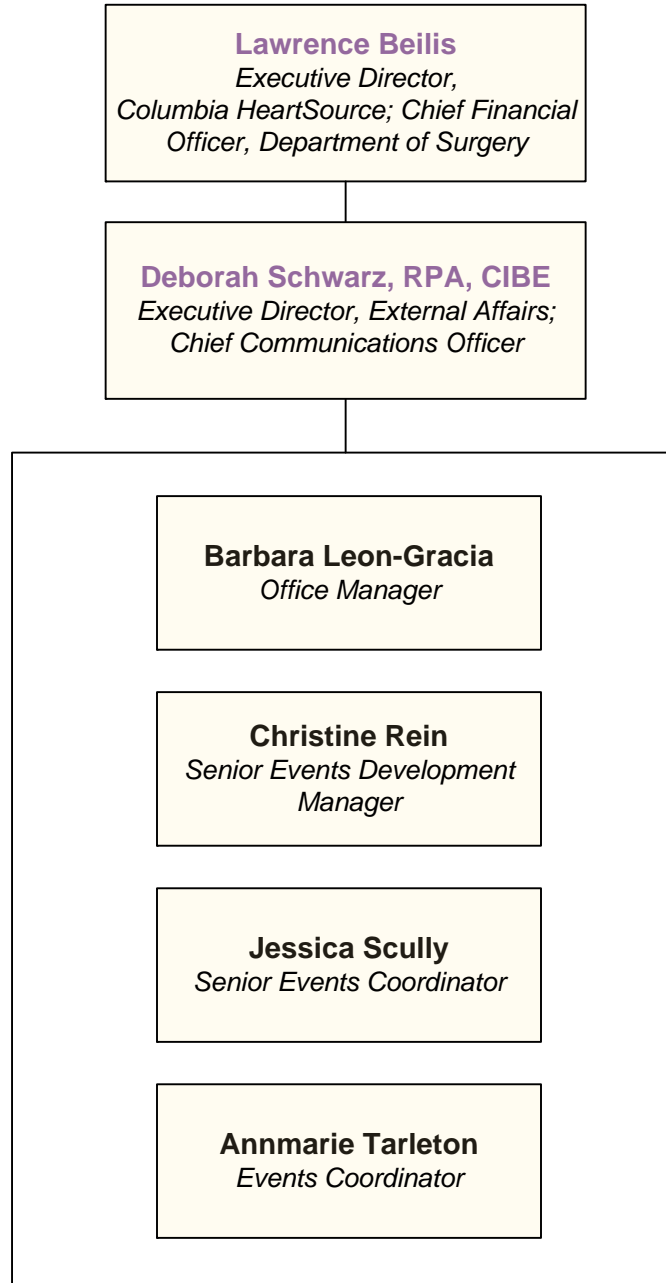
QUALITY MANAGEMENT

- Department of Surgery Faculty
- Affiliated Columbia & Cornell Faculty
- Directors
- PAs, NPs, and Nurse Coordinators
- Coordinators, Administrators, Managers, and Specialists



OFFICE OF EXTERNAL AFFAIRS

- Department of Surgery Faculty
- Affiliated Columbia & Cornell Faculty
- Directors
- PAs, NPs, and Nurse Coordinators
- Coordinators, Administrators, Managers, and Specialists

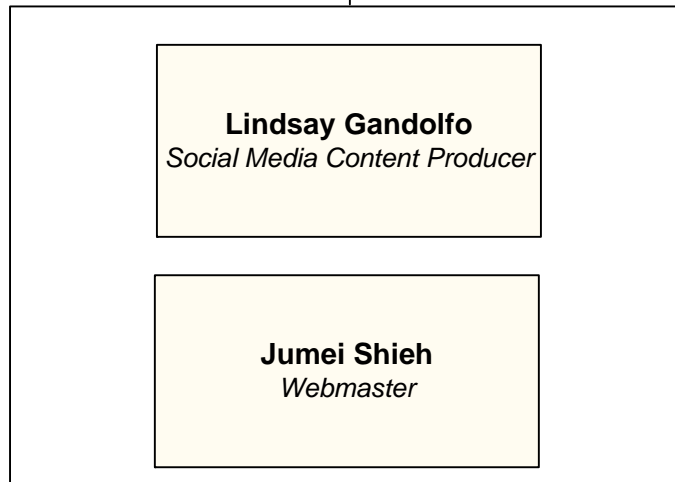


NEW MEDIA

- Department of Surgery Faculty
- Affiliated Columbia & Cornell Faculty
- Directors
- PAs, NPs, and Nurse Coordinators
- Coordinators, Administrators, Managers, and Specialists

James A. Lee, MD
Edwin C. and Anne K. Weiskopf Associate Professor of Surgical Oncology (in Surgery and in the Herbert Irving Comprehensive Cancer Center) at CUMC ; Chief, Endocrine/Thyroid Surgery Section; Director, Adrenal Center; Vice-Chair, New Media

Benjamin Schwartz, MD
Assistant Professor of Medicine (in Surgery); Director, New Media; Chief Creative Officer, Department of Surgery



RESEARCH & INFORMATION SYSTEMS

- Department of Surgery Faculty
- Affiliated Columbia & Cornell Faculty
- Directors
- PAs, NPs, and Nurse Coordinators
- Coordinators, Administrators, Managers, and Specialists

